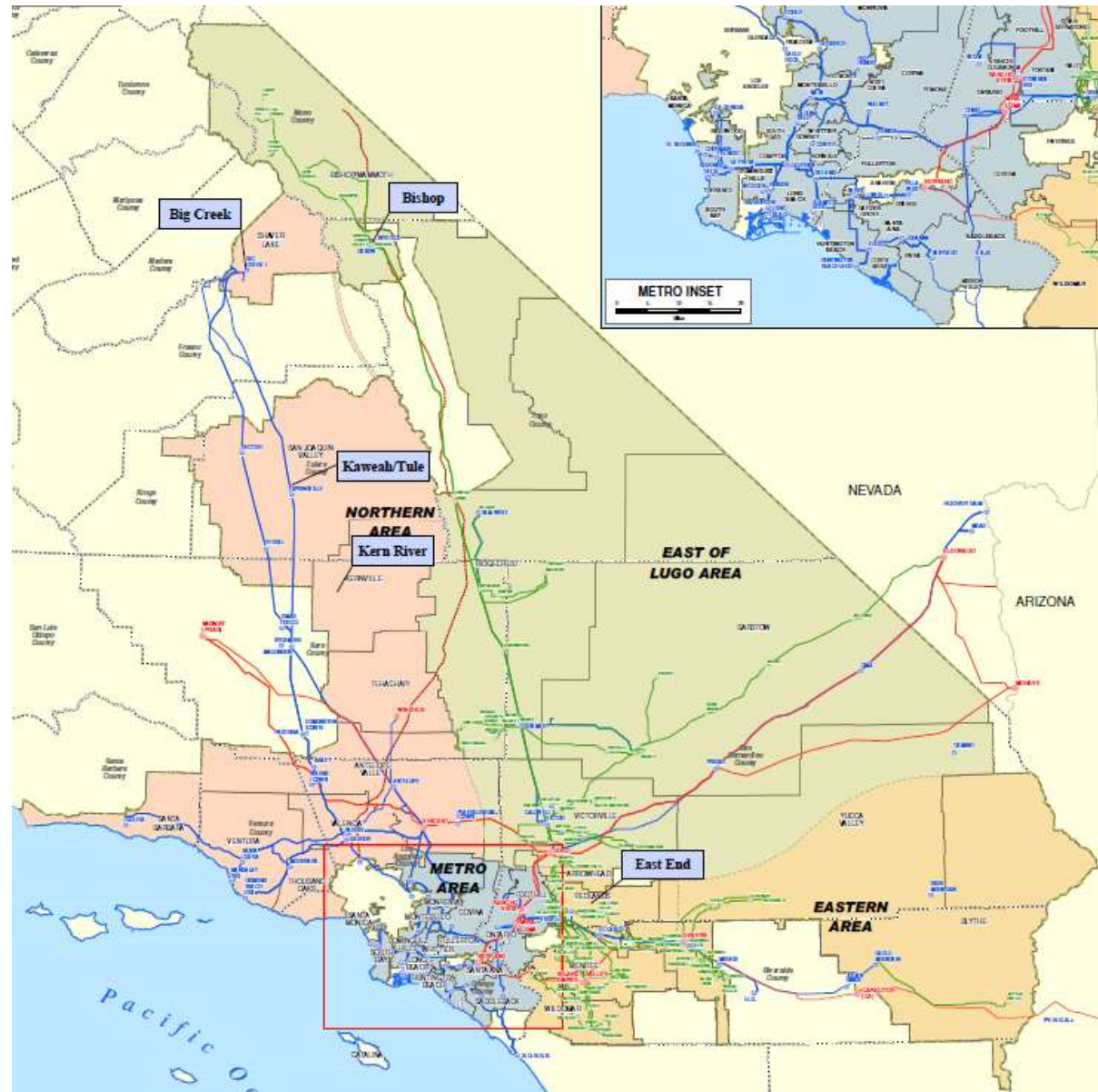




An overview of SCE's Hydro Generation

SCE System

- 14 Million customers
- 50,000 Square mile service territory
- Over 22,000 MW peak system demand



All Hydro Generation

- 20 FERC Licenses
- 36 Powerhouses
- 39 Dams/diversions
- 143 Miles of water ways
- 79 Generating units
- 1176.2 MW Capacity (nameplate rating)

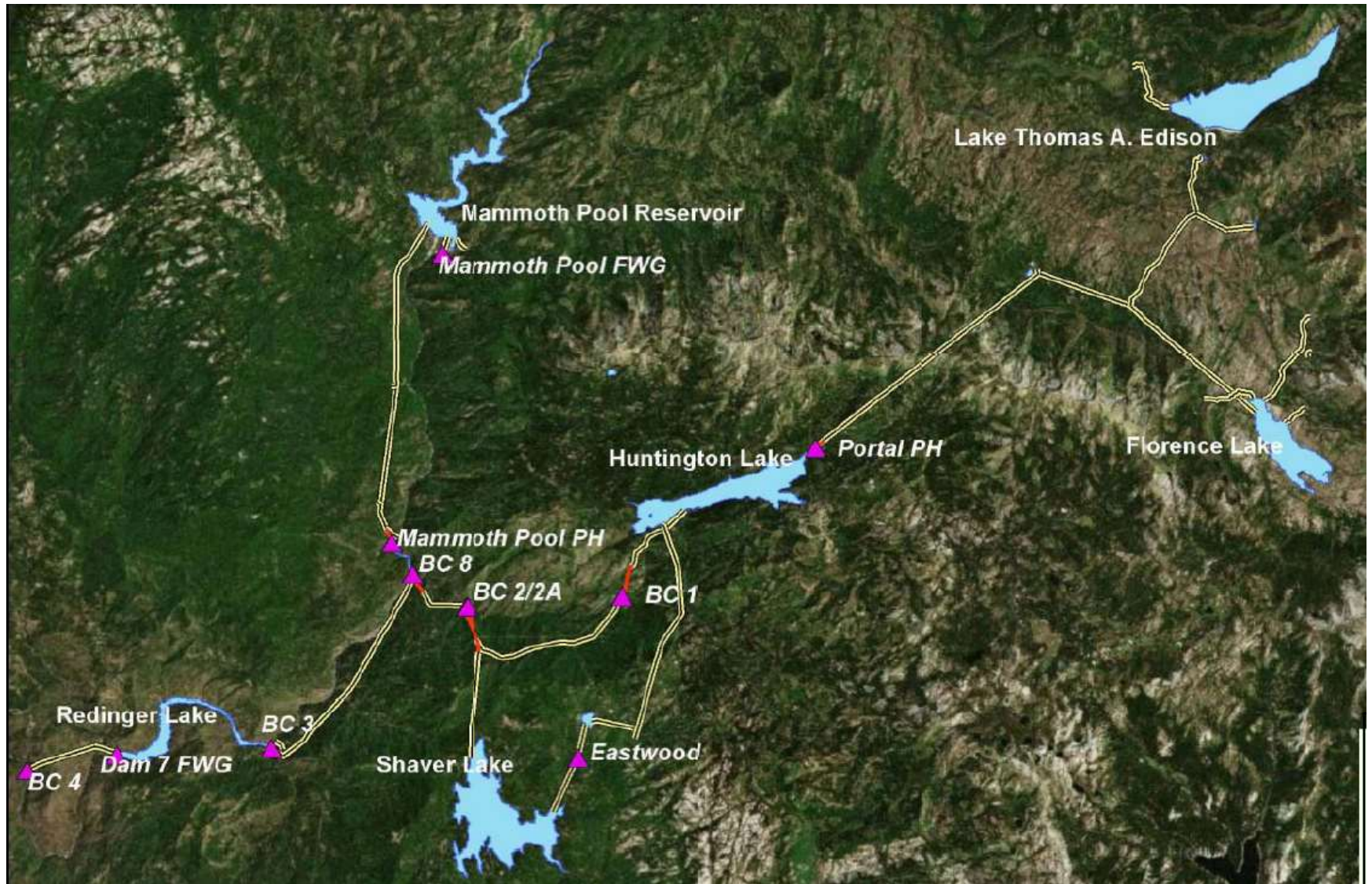


Northern Hydro (Big Creek)

- San Joaquin River Water Shed
- 7 FERC Licenses
- 9 Powerhouses
- 23 Generating Units
- 1014.9 MW Capacity



Northern Hydro (Big Creek)

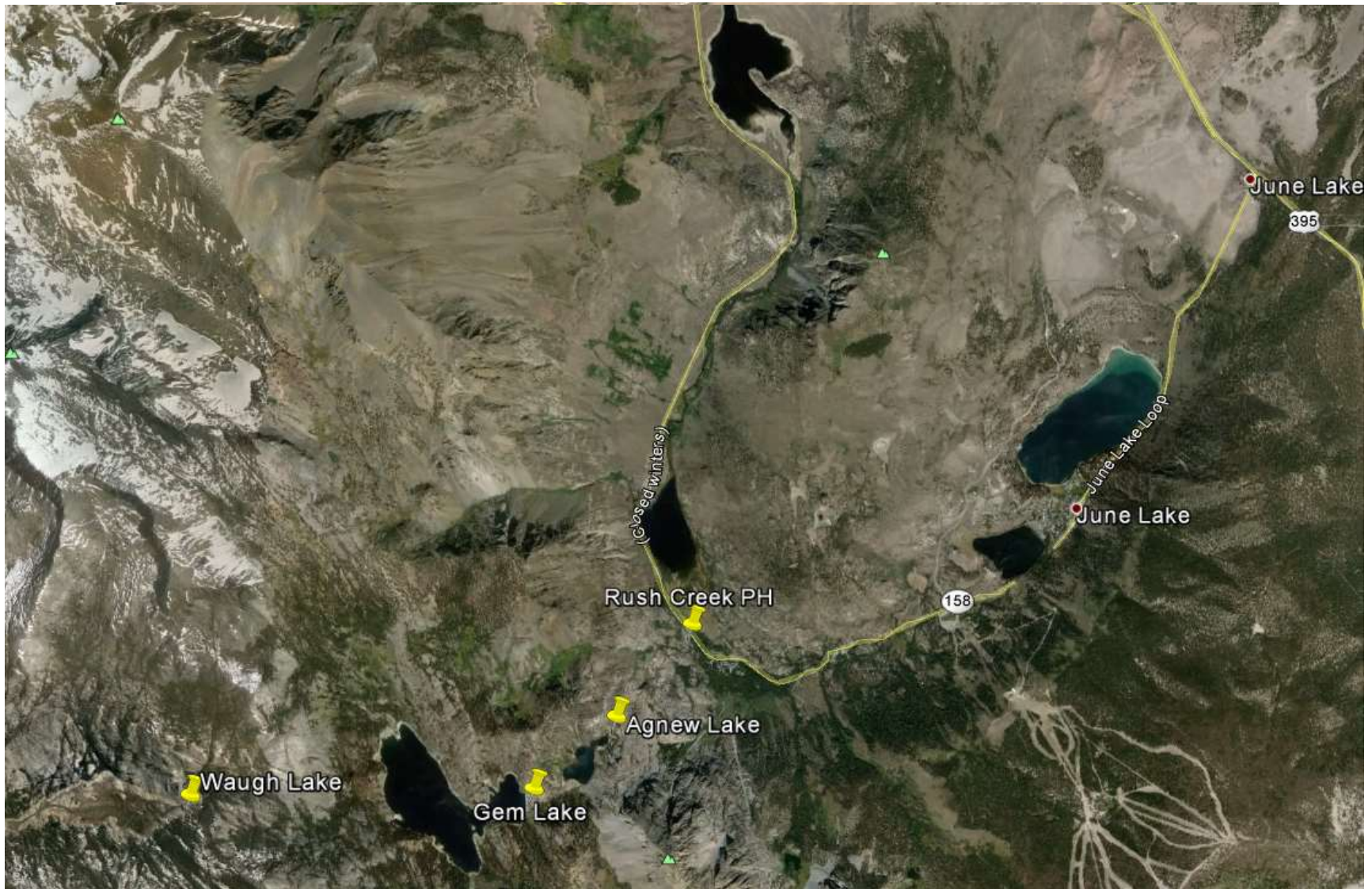


Eastern Hydro

- 4 separate areas of responsibility
- 13 FERC Licenses
- 24 Powerhouses
- 53 Generating Units
- 161.3 MW Capacity



Eastern Hydro- Bishop



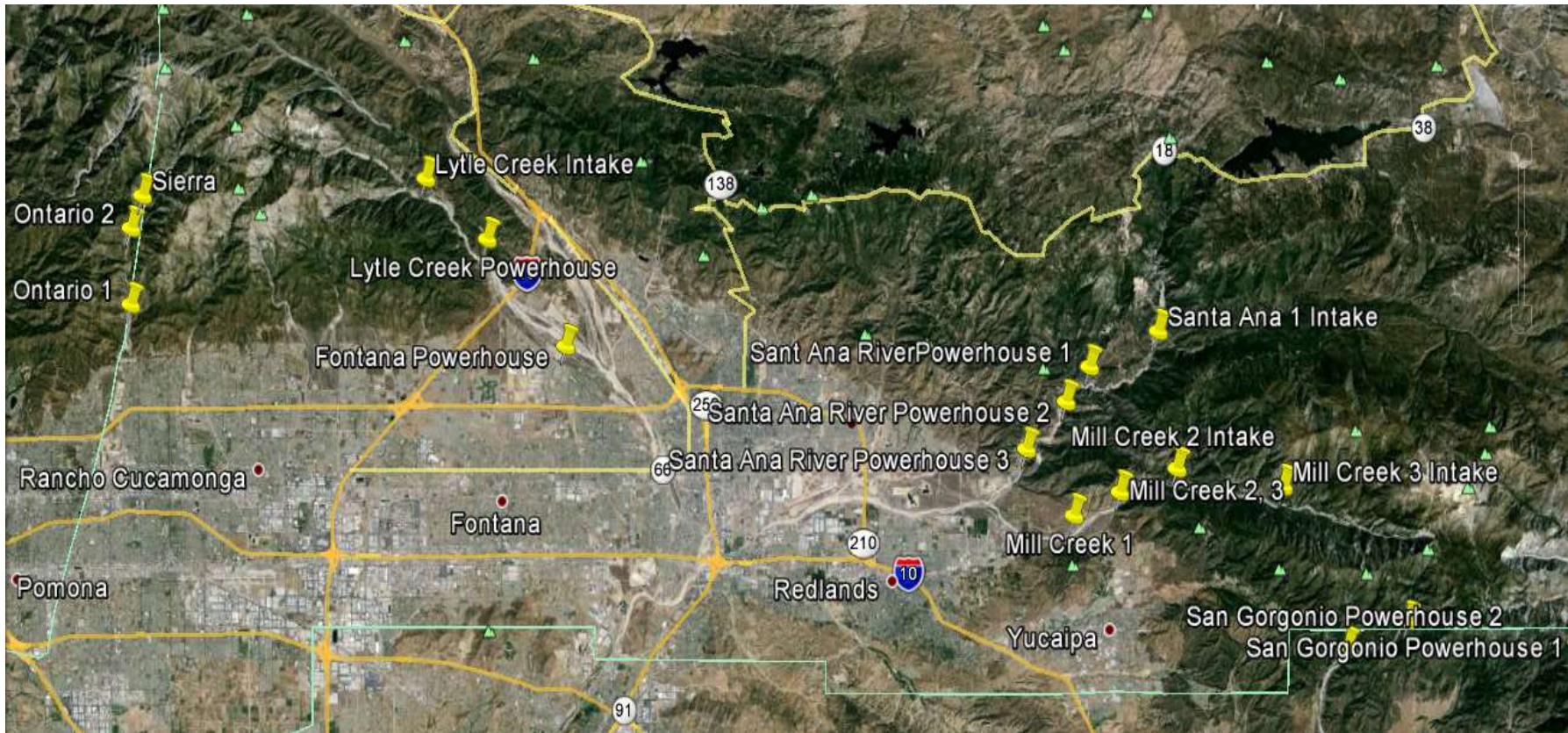
Eastern Hydro- Kaweah/Tule Rivers



Eastern Hydro- Kern River



Eastern Hydro- East End



Recreation Facilities

- 13 FERC Licenses with 1 or more recreation developments
- 18 Different developments

