


SCE	ESD	ENV	HB	Doc. No	1	 SOUTHERN CALIFORNIA EDISON An EDISON INTERNATIONAL® Company
				Version	1	
Effective Date						
Supersedes						

Environmental Handbook for Contractors

Environmental Services Department

Environmental Handbook for Contractors

SCE-ESD-ENV-HB-1

DocuSigned by:
Kenneth Borngrebe
Approved by: _____ Date: 5/7/2021
7419790CAF644B0...

Kenneth Borngrebe
Director, Environmental Services

DocuSigned by:
Ken Landrith
Approved by: _____ Date: 5/10/2021
8F36A5D15B79471...

Ken Landrith
Director, Corporate Supply Chain Management

Southern California Edison

Printed copies of this document are uncontrolled. In the case of a conflict between printed and electronic versions of this document, the controlled version published on SCE.com prevails

TABLE OF CONTENTS

1	Introduction	1
1.1	Applicability	1
1.2	Environmental Policy	1
1.3	Contractor Expectations.....	2
2	Contractor Environmental Requirements	2
3	Environmental Incident Reporting and Investigation	2
3.1	What is an Environmental Incident?	2
3.2	Environmental Incident Reporting Systems and Work Types	3
3.2.1	EHSync Incident Management:	3
3.2.2	Field Reporting Environmental Database:	3
3.3	Incident Severity	3
3.4	Incident Investigation and Corrective Actions Protocol	3
4	Contractor Environmental Compliance Performance	4
4.1	Purpose.....	4
4.2	Performance Evaluation Process	4
5	Communication Protocols	5
6	Contractor Acknowledgment	5
7	Definitions and Acronyms	6
8	APPENDIX A	9
Appendix A-1	Vegetation Management.....	10
Appendix A-2	Distribution, Transmission, Telecommunications, and Underground Civil	11
Appendix A-3	Substation Construction and Maintenance	12
Appendix A-4	Generation Construction and Maintenance	13
Appendix A-5	Facilities Management.....	14
Appendix A-6	Major Projects (Federal and/or State-Licensed).....	15
Appendix A-7	Non-Construction Field Activities (Patrols, Inspections, Planning/Design, Site Assessments, and Environmental Surveys/Monitoring)	16
Appendix A-8	Use of Equipment & Activities Subject to Air Quality Regulations (portable generators, fuel tanks, etc.) 17	
Appendix A-9	Hazardous Materials Transportation, storage, or handling.....	18
Appendix A-10	Waste Transportation, Storage, or Handling	19
9	APÉNDICE B	20
Apéndice B-1	Control de la vegetación	21
Apéndice B-2	Distribución, transmisión, telecomunicaciones y tareas civiles subterráneas	22
Apéndice B-3	Construcción y mantenimiento de subestaciones	23

Apéndice B-4	Construcción y mantenimiento de las instalaciones de generación	24
Apéndice B-5	Administración de instalaciones	25
Apéndice B-6	Proyectos grandes (con licencia federal y/o estatal)	26
Apéndice B-7	Actividades sobre el terreno no relacionadas con la construcción (patrullas, inspecciones, planificación/diseño, evaluaciones del sitio, y monitoreo/estudios ambientales)	27
Apéndice B-8	Uso de equipos sujetos a las normativas sobre la calidad del aire (generadores portátiles, tanques de combustible, etc.)	28
Apéndice B-9	Transporte, almacenamiento o tratamiento de materiales peligrosos.....	29
Apéndice B-10	Transporte, almacenamiento o tratamiento de residuos	30

1 INTRODUCTION

At Southern California Edison (SCE) we are committed to being good stewards of the environment by adhering to environmental laws and regulations, minimizing impacts to the environment, and taking prompt action to address environmental non-compliance incidents (“Environmental Incidents”). Caring for our communities and our environment is core to our mission and values. SCE requires our Contractors to share this commitment to environmental compliance and stewardship by following all applicable local, state, and federal laws and regulations, permit requirements, and any additional requirements set forth in SCE programs, policies and procedures. Contractors are also expected to support the continuous improvement of our environmental program.

This Environmental Handbook for Contractors (Environmental Handbook) has been developed to help ensure Contractors meet SCE’s environmental stewardship and compliance requirements, but it does not replace Contractors’ obligations to know and understand all applicable environmental laws and regulations that apply to their work. The Environmental Handbook provides Contractors with the following:

- Clear expectations for Contractors regarding environmental compliance while performing work for SCE (Section 1.0)
- Information to assist Contractors with understanding their SCE-specific environmental compliance responsibilities (see Section 2 – Contractor Environmental Requirements)
- Expectations for reporting Environmental Incidents and developing corrective actions to prevent reoccurrence, consistent with “Contractor Safety and Work Performance” policies and Supply Management supplier performance metrics (see Section 3 – Environmental Incident Reporting and Investigation)
- Criteria by which Contractors’ environmental compliance will be evaluated and environmental performance metrics by which Contractors will be held accountable (see Section 4 - Contractor Environmental Compliance Performance)
- Required communication protocols between Contractors, Edison Representatives, and SCE’s Environmental Services Department (ESD) (see Section 5 – Communication Protocols)

Note: The Environmental Handbook and the [Health & Safety Handbook for Contractors](#) were formerly combined as the Environmental, Health & Safety Handbook for Contractors. Contractors with existing Master Services Agreements may still find references to the former collective version but will now be pointed to separate Handbook links on the Contractor portal.

1.1 Applicability

The Environmental Handbook applies to all Contractors and Subcontractors who perform work for SCE. The Environmental Handbook requirements are also applicable to certain areas within the San Onofre Generating Station (SONGS). For questions on applicability to SONGS call the Environmental Notification Center at 833-SCE-2ENC/833-723-2362.

The Environmental Handbook may be revised periodically. The Edison Representative will notify Contractors when the Environmental Handbook is updated so that they can reference the most current version.

1.2 Environmental Policy

SCE is committed to preserving and protecting the environment and implementing sustainable business practices for the benefit of workers, customers, and the public. Contractors are expected to exhibit the same level of commitment to the environment when performing work for SCE. SCE’s Environmental Policy commits to:

- Adhering to all applicable laws, regulations, and the company’s environmental programs, procedures, and standards
- Wherever possible, minimizing impacts on the environment, and reducing natural resource consumption and waste generation.
- Stopping work if there is an Imminent Hazard to the environment
- Reporting actual or potential hazards to the environment
- Taking prompt action to correct environmental issues

1.3 Contractor Expectations

Contractors must adhere to SCE's Environmental Policy by doing the following:

- Read and understand the Environmental Handbook and comply with all applicable local, state, and federal laws and regulations, permit requirements, and any additional SCE-specific requirements that may apply as described in the Contractor Responsibilities (Appendix A)
- Ensure Subcontractors read the Environmental Handbook and understand that all environmental requirements applicable to the Contractor also apply to the Subcontractor and its employees
- Ensure Contractor representatives participate in any environmental awareness training provided by SCE
- Develop and ensure completion of environmental awareness training for Contractor employees and Subcontractors on an annual basis (or as needed for newly onboarded employees and Subcontractors), and retain documentation that provides proof of training completion
- Ensure Environmental Incidents are reported per the Contractor Environmental Requirements section of the Environmental Handbook (Section 2)
- Participate in the development of corrective actions following Environmental Incidents, and complete assigned corrective actions on-time
- Participate, as requested, in Contractor Performance Evaluations where the Supply Management Scorecard or Environmental Incident metrics are reviewed with the Edison Representative

2 CONTRACTOR ENVIRONMENTAL REQUIREMENTS

Contractors have an obligation to know and understand applicable environmental laws and regulations that pertain to their work. In addition, SCE has developed specific requirements for some work types that have the potential to impact sensitive resources or public health and safety. These SCE-specific requirements may be communicated to the Contractor and documented as part of the work order package, in the work management tool used to assign work, or via email or verbal guidance (followed up by written confirmation) by SCE. A list of work types that have additional SCE-specific requirements includes:

- Vegetation Management
- Distribution, Transmission, Telecommunications, and Underground Civil Construction and Maintenance
- Substation Construction and Maintenance
- Generation Construction and Maintenance
- Facilities Management and Maintenance
- Major (Federal- and/or State-Licensed) Projects
- Non-Construction Field Activities (Patrols, Inspections, Planning/Design, Site Assessments, and Environmental Surveys/Monitoring)
- Use of equipment subject to Air Quality regulations (helicopters, portable generators, fuel tanks, etc.)
- Hazardous Materials Transportation, storage, or handling
- Waste Transportation, storage, or handling

Contractors shall read, understand, and follow the applicable SCE-specific requirements for each job before performing any work associated with the above-listed work types. Appendix A provides summaries of Contractor expectations for each work type and the Contractor is responsible for communicating these requirements to its employees and Subcontractors.

3 ENVIRONMENTAL INCIDENT REPORTING AND INVESTIGATION

Contractors are required to report Environmental Incidents. The [Environmental Handbook for Contractors Process Flow](#) identifies the steps involved in reporting and tracking Environmental Incidents, as well as the follow-up actions required by this Environmental Handbook. The following sections define Environmental Incidents and provide Contractors guidance on how to report them.

3.1 What is an Environmental Incident?

Environmental Incidents include any of the following:

- Actual or potential violations of or deviations from any environmental requirement, including:
 - environmental laws and regulations,
 - the requirements listed in the Environmental Handbook,
 - project/program specific instructions provided by SCE,
 - environmental permits, or
 - other directions or requirements from regulatory agencies.
- Events that result, or are likely to result, in adverse environmental impacts – even if there is no violation of or deviation from an environmental requirement.
- Agency Engagements

3.2 Environmental Incident Reporting Systems and Work Types

SCE uses the following systems to record Environmental Incidents.

3.2.1 EHSync Incident Management:

EHSync Incident Management is the system used for documenting all Environmental Incidents except those specific projects identified by SCE that are required to use the Field Reporting Environmental Database (FRED). EHSync Incident Management is used to document a broad range of Environmental Incidents, including those occurring at SCE facilities (e.g., service center, substation, etc.) and at field locations (e.g., project sites involving construction and maintenance activities).

For Environmental Incidents discovered by the Contractor:

- The Contractor must immediately contact their Edison Representative and 833-SCE-2ENC
- The Contractor must, within one business day, complete the Environmental Incident Reporting Form, send the form to EHSync@sce.com for entry into EHSync, send the form to the Edison Representative, and send the form to the Supply Management Contract Representative.

For Environmental Incidents involving the Contractor discovered by other parties:

- The Contractor will be notified of the incident by SCE and may be asked to confirm their involvement in the incident
- The Contractor will review the incident and provide a written response within 24 hours
- The Contractor does not need to submit an Environmental Incident Reporting Form

3.2.2 Field Reporting Environmental Database:

FRED is the system used exclusively on Major Project Organization (MPO) projects and certain non-MPO projects identified by ESD. The system is accessible to SCE and external users that are associated with the projects (e.g., Contractors and Regulatory Agencies). When applicable, the use of FRED will be stipulated in a Contractor's response to SCE's scope of work.

3.3 Incident Severity

SCE uses incident severity levels to evaluate Environmental Incidents, to identify non-compliance trends, and to ensure that Contractors prevent and learn from Environmental Incidents. ESD classifies Environmental Incidents in categories (Clarification/Correction Required, Minor Incident or Major Incident) based on several factors including environmental and reputational impact, regulatory agency engagement, history of noncompliance or repeat violations, and other criteria.

The severity level assigned to an Environmental Incident may, as discussed below (Section 3.4), inform the type of investigation that is performed. In addition, the incident severity level may be a factor considered in the contractor performance evaluation process (Section 4.2).

3.4 Incident Investigation and Corrective Actions Protocol

After an Environmental Incident is reported, the Contractor involved will be contacted by SCE. SCE requires the Contractor to initiate an investigation, or to participate in an SCE-led investigation, within 24 hours of notification. If requested by SCE, Contractors must document the results of their investigation of the Environmental Incident, including a chronology or timeline of events leading to the incident. In addition, Contractors may be required to identify corrective actions that will prevent similar incidents from occurring. The

Contractor's identified corrective actions are subject to SCE's acceptance prior to implementation and may include, but are not limited to, adding additional resources such as compliance monitors, providing additional training, improving tailboard and/or end of day communications, or improving schedule projections, to ensure adequate and timely resource assignment and adherence to compliance requirements. Corrective actions will be documented in EHSync or FRED and Contractor-proposed corrective action implementation schedules must be approved by the Edison Representative and ESD representative. Depending on the type of incident, agency consultation and input on corrective actions may be required.

ESD assigns the Environmental Incident severity level. At SCE's discretion, individual incidents or a combination of incidents that are indicative of a potential pattern of noncompliance may require a thorough written cause evaluation to identify root causes leading to the Environmental Incident along with robust corrective actions. Contractors may be required to conduct the cause evaluation or to participate in an SCE-led evaluation. Upon review of the cause evaluation by SCE, the Edison Representative or delegate will engage with the Contractor as needed to share information related to the Environmental Incident and ensure Contractor action items are completed.

4 CONTRACTOR ENVIRONMENTAL COMPLIANCE PERFORMANCE

This section details SCE's environmental compliance performance criteria and data systems used to gather and report on Contractor performance.

4.1 Purpose

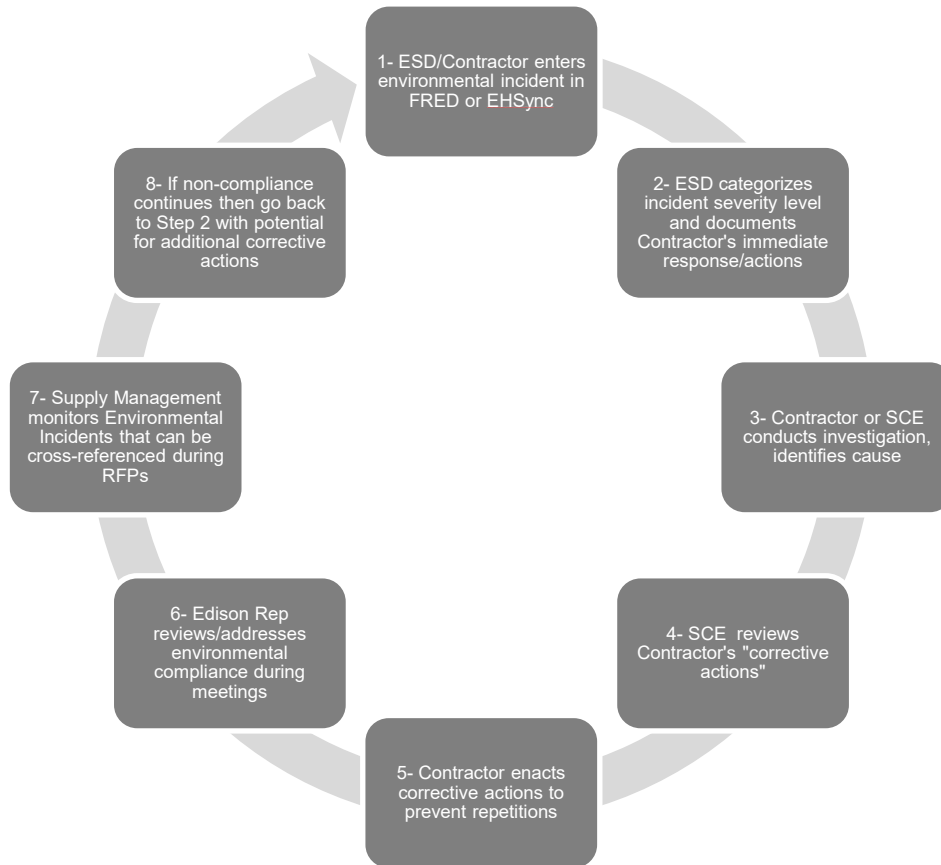
The performance evaluation process is used to identify performance trends, communicate areas of improvement, and manage Contractor performance based on the scope of work.

4.2 Performance Evaluation Process

To support SCE's environmental compliance and stewardship objectives and foster continuous improvement, Contractors will be evaluated on, and held accountable for, their environmental performance. Contractors are responsible for reporting Environmental Incidents and implementing necessary corrective actions to prevent reoccurrence. Environmental incidents, their severity level, and the Contractors' response will be tracked in EHSync or FRED, and this information will be utilized by Supply Management in performance Scorecards. The Scorecard and its performance metrics will allow the Contractor, Edison Representative and Supply Management to review, identify, and address patterns of Environmental Incidents in partnership with ESD. The Scorecard and other evaluation tools used by Supply Management are used to actively monitor and evaluate Contractor's environmental performance, verify that corrective actions are enacted, and improve overall compliance performance. The Edison Representative will also address environmental performance during contract meetings.

Non-compliance with environmental requirements, a poor record of environmental performance, multiple or more severe Environmental Incidents, and/or failure to implement corrective actions may result in SCE enacting control stage plans or taking other actions including feedback, temporary suspension of work activities, work stoppage, pursuing remedies for breach of contract, or contract termination. Termination of the contract would be pursuant to the terms and conditions of the Contractor's contract, and subject to any applicable cure period. Noncompliance with environmental laws and regulations can result in criminal and civil penalties, including jail time, if convicted in federal or state court.

Contractor Environmental Compliance Performance Evaluation Process



5 COMMUNICATION PROTOCOLS

Contractors shall direct all questions regarding the content of the Environmental Handbook to the Edison Representative. For work types listed in Appendix A, the Contractor shall follow the communication protocols included under each work type summary.

6 CONTRACTOR ACKNOWLEDGMENT

Prior to the start of work at the beginning of a contract term and following updates to the Environmental Handbook that may affect compliance with environmental requirements, the Edison Representative and the Contractor must meet to complete the Environmental Handbook for Contractors Acknowledgment [form](#). SCE requires all existing contractors to complete the Contractors Acknowledgment Form by August 6, 2021. This acknowledgment is to ensure that:

- Contractor has read and understands the Environmental Handbook for Contractors
- Contractor and Edison Representative have a clear understanding of the Contractor's scope of work, applicable environmental requirements, and plan for adhering to these requirements
- All Contractor employees and Subcontractors, working on behalf of SCE, know and understand the requirements applicable to their work contained in the Environmental Handbook for Contractors
- Contractor and Edison Representative understand their respective roles and the incident reporting requirements, as described in Appendix A
- Contractor will have the Field Guide section of the Environmental Handbook for Contractors accessible while in the field

This Environmental Handbook for Contractors Acknowledgment form must be retained by the Edison Representative in accordance with SCE document retention requirements.

7 DEFINITIONS AND ACRONYMS

Definitions of key terms used in the Environmental Handbook are listed below and capitalized in the document. Acronyms used within the document are provided below and identified when first used in the document.

Agency Engagement	Announced and unannounced visits to SCE work locations by a representative from a regulatory Agency. Agency Engagement also includes unanticipated official notification by a regulatory Agency (either telephone call, email, or letter) requesting corrective action or regarding a potential violation. The receipt of a citation, penalty, notice of violation (NOV), or notice to comply (NTC) are examples of Agency Engagements
Air District	Regional or local air districts known as either air quality management districts (AQMD) or Air Pollution Control Districts (APCD)
BHP	Brake Horsepower
BMP	Best Management Practice
CPUC	California Public Utility Commission
CUPA	Certified Unified Program Agencies
Contractor	The party entering a contract to perform work for SCE. This term also includes the Contractor's employee or agent, or persons authorized to represent the Contractor, such as the Contractor's superintendent or foreman. For the Environmental Handbook, the term "Contractor" is used to denote both Prime Contractors and Subcontractors unless otherwise stated.
E1P1	Emergent is defined as a P1 (Priority 1) safety and reliability risk that could include emergent, claim, or storm. An E1P1 is a notification for a single incident with the same cause (e.g., car hit pole, one pole line down due to wind, animal caused service interruption, multiple spans of wire down due to a fault current).
Edison Representative (Edison Rep)	An SCE employee responsible for managing the work performed under a contract. The Edison Representative may designate a trained SCE point of contact as a delegate who is familiar with the contract work being performed.
EHSync	A company-wide, environmental and safety compliance management system. EHSync includes the incident management module which is used for reporting Environmental Incidents including environmental incidents, agency engagements, avian fatalities or nests, and any release of hazardous materials.
ENC	Environmental Notification Center (833) SCE-2ENC or (833) 723-2362
Environmental Incidents	Actual or potential violation of or deviations from any environmental requirement, events that result or are like to result in adverse environmental impacts, and Agency Engagements.
Environmental Handbook	Environmental Handbook for Contractors

Environmental Project Manager	Environmental Services Department employees responsible for implementing various environmental compliance programs during project planning, licensing, permitting, and construction.
Environmental Stand-Down	Work stoppage for an entire project, program, or Contractor coordinated with Environmental Services, Supply Management, and the Edison Representative to address Environmental Incidents or a pattern of Environmental Incidents that may pose a threat to the environment.
EPA ID Number	Sites that ship hazardous waste to disposal facilities must have an Environmental Protection Agency (EPA) ID number. Transporters that ship hazardous waste must have a transporter EPA ID number.
Environmental Requirements	An electronic or hardcopy document/information with environmental requirements, including standard requirements, and any specific applicable work location or additional requirements. The Environmental requirements are measures that must be implemented before and/or during execution of work to avoid and/or minimize impacts to environmental resources. Environmental Requirements can also be referred to as Standard Environmental Requirements
ESA	Environmentally Sensitive Area – A designation for an area that needs special protection because of its resource values, e.g., riparian areas, wildlife habitat, historical values.
ESD	Southern California Edison Environmental Services Department
ESD Program Manager	Environmental Services Department employees responsible for development and implementation of environmental compliance programs.
FERC	Federal Energy Regulatory Commission
FRED	Field Reporting Environmental Database - a compliance management tool used primarily for CPUC-Licensed Projects to document compliance with regulatory requirements.
Imminent Hazards	Conditions that present the potential for immediate personal injury, environmental damage, significant property damage or significant environmental non-compliance
Licensed Project	Any project subject to a license or permit from a state or federal agency prior to implementation. Includes facilities permitted under a long-term license, such as hydroelectric facilities permitted under a FERC license or those projects requiring a CPUC license.
MPO	Major Project Organization
NOV	Notice of Violation
NRC	Nuclear Regulatory Commission
NTC	Notice to Correct or Notice to Comply
OES	Office of Emergency Services
PCB	Polychlorinated Biphenyl
SCE	Southern California Edison

Scorecard	Summary of Environmental Incidents assigned to a Contractor and compiled by Supply Management. The results of Environmental Incidents are captured within applicable Contractor Scorecards. The Scorecard identifies repeated Environmental Incidents so the Edison Representative can address them during formal contract meetings with Contractor.
SF₆	Sulfur hexafluoride
SONGS	San Onofre Generating Station
Stop Work	Immediate work stoppage by employees and/or Contractor workers when a perceived unsafe condition or behavior may result in an Imminent Hazard to the environment.
Subcontractor	A business or person hired by a Contractor to carry out specific parts of a contract for SCE as part of a larger project.
WCI	Waste Characterization Investigation
WEAP	Worker Environmental Awareness Program

8 APPENDIX A

The following Appendix consists of one-page summaries detailing contractor responsibilities associated with key work types identified in the Contractor Environmental Requirements section of the Environmental Handbook (Section 2.0). SCE requires the Contractor to ensure that crews keep a copy of the work type summaries in the field along with a copy of any Environmental Requirements, including any permits and SCE-specific requirements. These summaries provide Contractors a way to communicate the key provisions of the Environmental Handbook to field employees and Subcontractors and does not supersede or replace the job-specific environmental requirements, contractor environmental training, or the Contractors' and Subcontractors' obligation to follow all applicable laws and regulations:

Appendix A-1	Vegetation Management
Appendix A-2	Distribution, Transmission, Telecommunications, and Underground Civil
Appendix A-3	Substation Construction and Maintenance
Appendix A-4	Generation Construction and Maintenance
Appendix A-5	Facilities Management
Appendix A-6	Major Projects (Federal- and/or State-Licensed)
Appendix A-7	Non-Construction Field Activities (Patrols, Inspections, Planning/Design, Site Assessments, and Environmental Surveys/Monitoring)
Appendix A-8	Use of equipment subject to Air Quality regulations (portable generators, fuel tanks, etc.)
Appendix A-9	Hazardous Materials Transportation, storage, or handling
Appendix A-10	Waste Transportation, storage, or handling

Appendix A-1 Vegetation Management

CONTRACTOR ENVIRONMENTAL RESPONSIBILITIES**Vegetation Management****QUESTIONS?**

CALL ENVIRONMENTAL
NOTIFICATION CENTER AT

833-SCE-2ENC /

833-723-2362

Or email

VMEnvironmentalSupport@sce.com

FOR INCIDENTS INVOLVING
HAZARDOUS MATERIALS
RELEASE,

CONTACT YOUR EDISON REP
AND

844-GOT-SPIL OR

GOTSPILL@SCE.COM

You must self-report deviations
from the environmental
requirements, release of
hazardous materials, regulatory
agency visits to the work site,
and bird fatalities or nests
encountered using the

**[ENVIRONMENTAL EVENT
REPORTING FORM](#)**

What You Need to Know...

- Contractor employees are **NOT ALLOWED** to perform work without completing yearly environmental awareness training
- Look for your Environmental Requirements in the Work Management System
- **READ, UNDERSTAND, and FOLLOW** your **ENVIRONMENTAL REQUIREMENTS** before scheduling or conducting all work, including P1/Emergencies and “call-outs”
- **STOP** if you don’t know the Environmental Requirements and call 833-723-2362
- **Only conduct work authorized in your Environmental Requirements**
 - Changes to work scope must have additional environmental reviews before proceeding
- Confirm **pre-activity** Environmental Requirements (e.g., pre-activity survey, scheduling a monitor):
 - are included in your schedule
 - have been completed and you have authorization from Environmental Services to proceed with work
- Review the Environmental Requirements at **EACH** tailboard
- Watch for nesting birds, waterways etc... **STOP** work if there are active bird nests, other wildlife, waterways (wet or dry), cultural/archaeological resources, or for any other environmental concerns

Dry Streambed



Nesting Woodpecker



Appendix A-2 Distribution, Transmission, Telecommunications, and Underground Civil

CONTRACTOR ENVIRONMENTAL RESPONSIBILITIES

Distribution, Transmission, Telecommunications, and Underground Civil

QUESTIONS?

CALL ENVIRONMENTAL NOTIFICATION CENTER AT
833-SCE-2ENC / 833-723-2362
EnvironmentalRequirements@sce.com

FOR INCIDENTS INVOLVING HAZARDOUS MATERIALS RELEASE, CONTACT YOUR EDISON REP AND 844-GOT-SPILL OR GOTSPILL@SCE.COM

You must self-report any deviation from the environmental requirements, release of hazardous materials, regulatory agency visits to the work site, and bird fatalities or nests encountered using the [ENVIRONMENTAL EVENT REPORTING FORM](#)

What You Need to Know...

- Contractor employees are NOT ALLOWED to perform work without completing environmental awareness training
- **ALL** work with ground- or vegetation-disturbing activities or off-road/overland travel have Environmental Requirements, including P1s
- Look for your Environmental Requirements in the Work Order
- **READ, UNDERSTAND, and FOLLOW your Environmental Requirements before scheduling or conducting work**
- **STOP** if you don't know the Environmental Requirements and call 833-723-2362
- **Only conduct work authorized in your Environmental Requirements**
 - Changes to work scope must have additional environmental reviews before proceeding
- Confirm pre-activity environmental requirements (e.g., pre-activity survey, scheduling a monitor):
 - are included in your schedule
 - have been completed and you have authorization from Environmental Services to proceed with work
- Review the Environmental Requirements at **EACH** tailboard
- Watch for nesting birds, waterways etc... **STOP** work if there are active bird nests, other wildlife, waterways (wet or dry), cultural/archaeological resources, or for any other environmental concerns

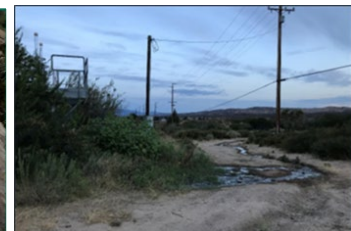
Desert Tortoise



Cultural Resources



Waterway



Appendix A-3 Substation Construction and Maintenance

CONTRACTOR ENVIRONMENTAL RESPONSIBILITIES

Substation Construction and Maintenance

QUESTIONS?

CALL ENVIRONMENTAL
NOTIFICATION CENTER AT
833-SCE-2ENC /
833-723-2362 or
EnvironmentalRequirements@sce.com

FOR INCIDENTS
INVOLVING HAZARDOUS
MATERIALS RELEASE,
CONTACT YOUR EDISON
REP AND 844-GOT-SPIL
OR GOTSPILL@SCE.COM

You must self-report deviation
from the environmental
requirements, release of
hazardous materials, regulatory
agency visits to the work site,
and bird fatalities or nests
encountered using the
**[ENVIRONMENTAL EVENT
REPORTING FORM](#)**

What You Need to Know...

- Ensure you are up to date with yearly environmental awareness training
- **ALL** ground disturbing activities require environmental requirements
- Look for your Environmental Requirements in the Work Order
- **READ, UNDERSTAND, and FOLLOW your ENVIRONMENTAL REQUIREMENTS before scheduling or conducting work**
- **STOP** if you don't know the Environmental Requirements and call 833-723-2362
- **Only conduct work authorized in your Environmental Requirements**
 - Changes to work scope must have additional environmental reviews before proceeding
- **STOP** work if there are active bird nests, other wildlife, cultural/archaeological resources, or for any other environmental concerns, and call 833-723-2362 if you have an observation or questions

Rack Construction



Transformer Installation



Appendix A-4 Generation Construction and Maintenance

CONTRACTOR ENVIRONMENTAL RESPONSIBILITIES

Generation Construction and Maintenance

QUESTIONS?

CALL ENVIRONMENTAL
NOTIFICATION CENTER
AT
833-SCE-2ENC /
833-723-2362 or
EnvironmentalRequirements@sce.com

FOR INCIDENTS
INVOLVING HAZARDOUS
MATERIALS RELEASE,
CONTACT YOUR EDISON
REP AND 844-GOT-SPIL
OR GOTSPILL@SCE.COM

You must self-report deviation from the environmental requirements, release of hazardous materials, regulatory agency visits to the work site, and bird fatalities or nests encountered using the [ENVIRONMENTAL EVENT REPORTING FORM](#)

What You Need to Know...

- Ensure you have completed any site or project-specific environmental awareness training (e.g., WEAP training, station conditions, etc.)
- **ALL** work has Environmental Requirements, including P1/Emergencies and “call-outs”
- Look for your Environmental Requirements in the Work Order
- **READ, UNDERSTAND, and FOLLOW your ENVIRONMENTAL REQUIREMENTS, which may include permit conditions, before scheduling or conducting work**
- **STOP** if you don't know the Environmental Requirements and call 833-723-2362
- **Only conduct work authorized in your Environmental Requirements**
 - Changes to work scope must have additional environmental reviews before proceeding
- Confirm pre-activity Environmental Requirements (e.g., pre-activity survey, scheduling a monitor):
 - are included in your schedule
 - have been completed and you have authorization from Environmental Services to proceed with work
- Review the Environmental Requirements at **EACH** tailboard
- **STOP** work if there are active bird nests, other wildlife, waterways (wet or dry), cultural/archaeological resources, or for any other environmental concerns

Installation and Compaction of Permeable Base Rock



Active Nest



Appendix A-5 Facilities Management

CONTRACTOR ENVIRONMENTAL RESPONSIBILITIES**Facilities Management****QUESTIONS?**

CALL ENVIRONMENTAL
NOTIFICATION CENTER
AT

833-SCE-2ENC /
833-723-2362 or

EnvironmentalRequirements@sce.com

FOR INCIDENTS
INVOLVING HAZARDOUS
MATERIALS RELEASE,
CONTACT YOUR EDISON
REP AND 844-GOT-SPIL
OR GOTSPILL@SCE.COM

You must self-report deviation from the environmental requirements, release of hazardous materials, regulatory agency visits to the work site, and bird fatalities or nests encountered using the [ENVIRONMENTAL EVENT REPORTING FORM](#)

What You Need to Know...

- Ensure you have requested a Waste Characterization Investigation (WCI) for projects involving soil, concrete, and/or asphalt excavation and disposal
- Ensure you have requested asbestos and lead paint survey for any building demolition and/or renovation
- **READ, UNDERSTAND, and FOLLOW your ENVIRONMENTAL REQUIREMENTS, which may include permit conditions, before scheduling or conducting work**
- **Only conduct work authorized in your Environmental Requirements**
 - Changes to work scope must have additional environmental reviews before proceeding
- Confirm pre-activity Environmental Requirements (e.g., pre-activity survey, scheduling a monitor):
 - are included in your schedule
 - have been completed and you have authorization from Environmental Services to proceed with work
- Review the Environmental Requirements at **EACH** tailboard
- **STOP** work if there are active bird nests, other wildlife, waterways (wet or dry), cultural/archaeological resources, or for any other environmental concerns

Facilities Construction/Renovation



Facilities Landscaping



Appendix A-6 Major Projects (Federal and/or State-Licensed)

CONTRACTOR ENVIRONMENTAL RESPONSIBILITIES**Major Projects (State- &/or Federal licensed)****QUESTIONS?**

**CONTACT YOUR NEAREST
MONITOR OR USE YOUR
PROJECT CONTACT LIST
IF UNCLEAR,
CALL ENVIRONMENTAL
NOTIFICATION CENTER
AT
833-SCE-2ENC /
833-723-2362
TO BE DIRECTED TO THE
RIGHT PERSON**

**FOR INCIDENTS
INVOLVING HAZARDOUS
MATERIALS RELEASE:
CONTACT YOUR PROJECT
ENVIRONMENTAL
CONTACT, NOTIFY THE
SCE PROJECT TEAM, AND
SUBMIT THE INITIAL AND
FINAL SPILL REPORTS**

*You must self-report deviation
from the environmental
requirements, release of
hazardous materials, regulatory
agency visits to the work site,
and bird fatalities or nests
encountered using the
**ENVIRONMENTAL EVENT
REPORTING FORM***

What You Need to Know...

- Ensure you have taken the Worker Environmental Awareness Program (WEAP) training
- **You must follow ALL** Mitigation Measures and permit conditions - **IF YOU HAVE QUESTIONS... ASK BEFORE YOU ACT**
- **READ, UNDERSTAND, and FOLLOW your Mitigation Measures and permit conditions before scheduling or conducting work**
- **STOP** if you don't know the Mitigation Measures and permit conditions and contact your nearest Monitor or Project Environmental Contact
- **Only conduct work authorized in your approved scope and approved project disturbance areas**
 - Changes to work scope must have SCE approval
- Confirm pre-activity Environmental Requirements by:
 - Completing a daily 3 DAY LOOKAHEAD POD
 - **HAVING** project authorization to proceed with work
- Review and understand the Environmental Requirements and complete a site 360-Walkaround for Environmentally Sensitive Areas (ESAs) at **EACH** tailboard
- **STOP** work if there are active bird nests, other wildlife, waterways (wet or dry), cultural/archaeological resources, or for any other environmental concern

Best Management Practice (BMP)*Tower Construction*

Appendix A-7 Non-Construction Field Activities (Patrols, Inspections, Planning/Design, Site Assessments, and Environmental Surveys/Monitoring)

CONTRACTOR ENVIRONMENTAL RESPONSIBILITIES

Non-Construction Field Activities

(Patrols, Inspections, Planning/Design, Site Assessments, and Environmental Surveys/Monitoring)

QUESTIONS?

CALL ENVIRONMENTAL
NOTIFICATION CENTER AT
833-SCE-2ENC /
833-723-2362
[EnvironmentalRequirements](mailto:EnvironmentalRequirements@sce.com)
[@sce.com](mailto:EnvironmentalRequirements@sce.com)

FOR INCIDENTS
INVOLVING HAZARDOUS
MATERIALS RELEASE,
CONTACT YOUR EDISON
REP AND 844-GOT-SPIL
OR GOTSPILL@SCE.COM

You must self-report deviation
from the environmental
requirements, release of
hazardous materials, regulatory
agency visits to the work site,
and bird fatalities or nests
encountered using the
[ENVIRONMENTAL EVENT
REPORTING FORM](#)

What You Need to Know...

- Field activities under this guidance include patrols, inspections (ground and/or aerial), and fielding structures for planning/design
- If you have questions about types of authorizations required for entering public/government lands, **STOP** and call 833-723-2362 for further guidance
- Ensure you are up to date with yearly environmental awareness training
- Vehicles and equipment must stay on existing roads
 - Activities that are off-road must be accessed on foot
 - Use rubber tire vehicles only on existing roads to cross wet or dry wash/drainage with a ground clearance
- If off-road/overland travel is required, **STOP** and call 833-723-2362 for further guidance
- If you need to cut/brush vegetation for access to inspect, **STOP** and call 833-723-2362 for further guidance
- Environmental Requirements are not required for these types of field activities, but you are expected to be aware of your surroundings
- **STOP** and call 833-723-2362 if you have an observation or questions



Appendix A-8 Use of Equipment & Activities Subject to Air Quality Regulations (portable generators, fuel tanks, etc.)

CONTRACTOR ENVIRONMENTAL RESPONSIBILITIES

Use of Equipment & Activities Subject to Air Quality Regulations

(portable generators, fuel tanks, etc.)

QUESTIONS?

CALL ENVIRONMENTAL
NOTIFICATION CENTER
AT

833-SCE-2ENC /
833-723-2362 or

EnvironmentalRequirements@sce.com

FOR INCIDENTS
INVOLVING HAZARDOUS
MATERIALS RELEASE,
CONTACT YOUR EDISON
REP AND 844-GOT-SPIL
OR GOTSPILL@SCE.COM

You must self-report deviation from the environmental requirements, release of hazardous materials, regulatory agency visits to the work site, and bird fatalities or nests encountered using the [ENVIRONMENTAL EVENT REPORTING FORM](#)

What You Need to Know...

- **Any equipment** or operation that emits or has the potential to emit a regulated air contaminant must have an appropriate registration and/or air permit
- Do not bring any equipment that is registered/permited by an air agency to SCE **natural gas/diesel generating stations** without informing Environmental Notification Center (ENC).
- **Portable generators** that are 50 bhp or greater must be procured and approved through SCE Portable Generator Request Form submission
- If portable gasoline tanks (250+ gallons) are used ensure local air district permits are obtained prior to deployment
- Do not intentionally vent high global warming potential gasses such as **refrigerant, halons, and sulfur hexafluoride (SF₆)**. Call 844-GOT-SPIL for accidental release
- **Chemical products** must be approved by SCE prior to use.
- Adhere to the project **dust** control plans
- Some construction projects may be subject to **asbestos** survey and notification. If you are not sure about your project's asbestos survey requirements or suspect asbestos-contained material, call **ENC**
- Do not idle **off-road diesel construction vehicles** for more than 5 minutes
- Dust from construction, diesel fumes, odors, and other air contaminants can create a "**nuisance**." If a local Air District inspector or residents allege a nuisance condition, contact ENC.
- Maintain all applicable monitoring, recordkeeping, and reporting as required by registrations, permits, and regulations.

Portable Generator



Off-Road Construction Vehicle



Appendix A-9 Hazardous Materials Transportation, storage, or handling

CONTRACTOR ENVIRONMENTAL RESPONSIBILITIES

Hazardous Materials Transportation, Storage, or Handling

QUESTIONS?

CALL 844-GOT-SPIL OR GOTSPILL@SCE.COM

FOR INCIDENTS INVOLVING HAZARDOUS MATERIALS RELEASE, CONTACT YOUR EDISON REP AND 844-GOT-SPIL OR GOTSPILL@SCE.COM

*You must self-report deviation from the environmental requirements, release of hazardous materials, regulatory agency visits to the work site, and bird fatalities or nests encountered using the **ENVIRONMENTAL EVENT REPORTING FORM***

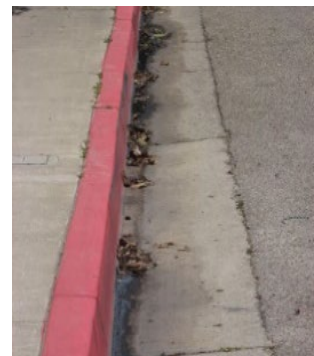
What You Need to Know...

- Call 911 for large spills or releases that create an emergency due to possible fire, explosion, or risk to health and safety of people
- All releases to the environment must be reported to your SCE Rep and 844-GOT-SPIL (844-468-7745)
- Contractors have responsibility for spill prevention and clean-up of releases caused by the contractor
- Maintain an adequate supply of spill containment materials on hand to manage incidental releases
- Adhere to the regulatory requirements for immediately reporting spills to agencies (e.g., OES, CUPA, NRC etc.)
- Ensure employees are properly trained in spill response or utilize qualified response companies

Spill Clean-up in Waterway



Hydraulic Leak in Road



Appendix A-10 Waste Transportation, Storage, or Handling

CONTRACTOR ENVIRONMENTAL RESPONSIBILITIES

Waste Transportation, Storage, or Handling

QUESTIONS?

FOR INCIDENTS INVOLVING HAZARDOUS MATERIALS RELEASE, CONTACT YOUR EDISON REP AND 844-GOT-SPIL OR GOTSPILL@SCE.COM

Hazardous Waste

Used Oil
Oil Filled Electrical Equipment

Universal Waste

Streetlamps
Electronics
Batteries

Other Regulated Wastes

Treated Wood
Tires
Empty Containers
Asbestos
Concrete/Asphalt
Soil

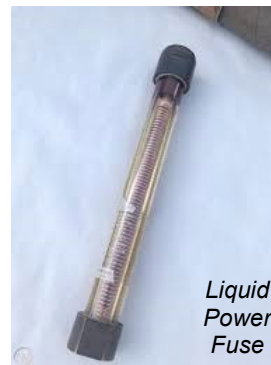
You must self-report deviation from the environmental requirements, release of hazardous materials, regulatory agency visits to the work site, and bird fatalities or nests encountered using the

ENVIRONMENTAL EVENT REPORTING FORM

What You Need to Know...

- **STOP** if you do not know the Waste Handling Requirements and call 844-GOT-SPIL or email GOTSPILL@sce.com
- **STOP** work if there are any safety or environmental concerns
- Contact 844-GOT-SPIL or email GOTSPILL@sce.com for guidance on any waste transportation, storage or handling requirements.
- Generating and managing wastes such as soil, asbestos, concrete, asphalt, batteries, and tires during your work
- Performing Right-of-Way clean-ups
- Generating any waste including Hazardous, non-Hazardous, Universal, or PCB waste, SCE Environmental will properly characterize the waste.
- If working with pre-1980 oil filled equipment anticipate Polychlorinated Biphenyls (PCBs) which require special handling, labeling and disposal timeframes.
- Only SCE Environmental is authorized to sign hazardous waste disposal profiles
- Soil, concrete, or asphalt removal requires a Waste Characterization Investigation (WCI) from SCE Environmental that includes the waste handling requirements.
- Scrap metal is authorized to be placed in designated scrap metal bins. Do not throw hazardous waste including liquid power fuses and mercury switches into the scrap metal bin.
- Utility wood waste (poles/cross arms) is authorized to be placed in designated utility wood bins.
- Only SCE-approved hazardous waste disposal and transportation vendors may be used to transport and dispose of hazardous waste
- Segregate waste to minimize waste to landfill and ensure all waste is sent to an SCE approved facility.
- A copy of all shipping papers must be sent to Manifests@sce.com. If you are not specifically authorized to sign a manifest on behalf of SCE, do not sign.
- Contact 844-GOT-SPIL for guidance when performing Right-of-way cleanups.
- Read, understand, and follow your scope of work and the SCE Contractor Hazard Assessment and Safety Plan before conducting work. **Only conduct work authorized in your scope**

Abandoned Waste Drums



Liquid Power Fuse



9 APÉNDICE B

El siguiente Apéndice consta de resúmenes de una página que detallan las responsabilidades del contratista en relación con tipos de tareas clave identificadas en la sección "Requisitos ambientales del contratista" del Manual ambiental (Sección 2.0). SCE requiere que el contratista se asegure de que los trabajadores siempre tengan en el terreno una copia de los resúmenes del tipo de tarea junto con una copia de los Requisitos ambientales, incluidos los permisos y requisitos específicos de SCE. Estos resúmenes brindan a los contratistas una forma de comunicar las disposiciones principales del Manual ambiental a los empleados de servicio externo y a los subcontratistas, y no sustituyen ni reemplazan a los requisitos ambientales específicos de la tarea, la capacitación ambiental del contratista o la obligación de los contratistas de cumplir con todas las leyes y regulaciones aplicables:

- Apéndice B-1 Control de la vegetación
- Apéndice B-2 Distribución, transmisión, telecomunicaciones y tareas civiles subterráneas
- Apéndice B-3 Construcción y mantenimiento de subestaciones
- Apéndice B-4 Construcción y mantenimiento de las instalaciones de generación
- Apéndice B-5 Administración de instalaciones
- Apéndice B-6 Proyectos grandes (con licencia federal y/o estatal)
- Apéndice B-7 Actividades sobre el terreno no relacionadas con la construcción (patrullas, inspecciones, planificación/diseño, evaluaciones del sitio, y monitoreo/estudios ambientales)
- Apéndice B-8 Uso de equipos sujetos a las normativas sobre la calidad del aire (generadores portátiles, tanques de combustible, etc.)
- Apéndice B-9 Transporte, almacenamiento o tratamiento de materiales peligrosos
- Apéndice B-10 Transporte, almacenamiento o tratamiento de residuos

Apéndice B-1 Control de la vegetación

RESPONSABILIDADES AMBIENTALES DE LOS CONTRATISTAS

Control de la vegetación

¿TIENE PREGUNTAS?

CONTACTE AL CENTRO
DE NOTIFICACIONES
AMBIENTALES AL

833-SCE-2ENC /

833-723-2362

o envíe un correo
electrónico a

VMEnvironmentalSupport@sce.com

EN CASO DE DERRAMES

DE MATERIALES
PELIGROSOS,

CONTACTE A SU
REPRESENTANTE DE
EDISON Y AL

844-GOT-SPIL O
GOTSPILL@SCE.COM

Usted debe comunicar cualquier desviación respecto de los requisitos ambientales, derrames de materiales peligrosos, visitas de agencias reguladoras al área de trabajo y muertes de aves o nidos encontrados utilizando el [ENVIRONMENTAL EVENT REPORTING FORM](#)

(FORMULARIO DE REPORTE DE INCIDENTES AMBIENTALES)

Qué debe saber...

- Los empleados del contratista **NO ESTÁN AUTORIZADOS** a realizar tareas si no han participado en la capacitación ambiental anual.
- Busque sus Requisitos ambientales en el Sistema de manejo de tareas.
- **DEBE LEER, ENTENDER y CUMPLIR sus REQUISITOS AMBIENTALES** antes de programar o realizar cualquier tarea, incluyendo P1/Emergencias y las "llamadas".
- Si no conoce los Requisitos ambientales, **INTERRUMPA LAS TAREAS** y llame al 833-723-2362.
- **Realice únicamente las tareas autorizadas en sus Requisitos ambientales.**
 - Cualquier cambio en los términos de las tareas debe someterse a evaluaciones ambientales adicionales antes de continuar.
- Confirme que los Requisitos ambientales **previos** a la actividad (p. ej., la inspección previa a las actividades, la programación de un monitor):
 - Estén incluidos en su cronograma.
 - Se hayan realizado y usted tenga la autorización del Departamento de Servicios Ambientales para comenzar las tareas.
- Revise los Requisitos ambientales durante **CADA** reunión en la que se expliquen las tareas a realizar (tailboard).
- Esté atento a las aves en proceso de anidación, los cursos de agua, etc. **INTERRUMPA** las tareas si hay nidos de aves activos, otras especies silvestres, cursos de agua (con agua presente o secos), recursos culturales/arqueológicos o cualquier otra inquietud ambiental.

Curso de agua



Pájaro carpintero en proceso de anidación



Apéndice B-2 Distribución, transmisión, telecomunicaciones y tareas civiles subterráneas

RESPONSABILIDADES AMBIENTALES DE LOS CONTRATISTAS**Distribución, transmisión, telecomunicaciones y tareas civiles subterráneas****¿TIENE PREGUNTAS?**

CONTACTE AL CENTRO DE NOTIFICACIONES AMBIENTALES AL

833-SCE-2ENC /

833-723-2362

o envíe un correo electrónico a

EnvironmentalRequirements@sce.com

EN CASO DE DERRAMES DE MATERIALES PELIGROSOS,

CONTACTE A SU REPRESENTANTE DE EDISON Y AL

844-GOT-SPIL O GOTSPILL@SCE.COM

Usted debe comunicar cualquier desviación respecto de los requisitos ambientales, derrames de materiales peligrosos, visitas de agencias reguladoras al área de trabajo y muertes de aves o nidos encontrados utilizando el

[ENVIRONMENTAL EVENT REPORTING FORM](#)

(FORMULARIO DE REPORTE DE INCIDENTES AMBIENTALES)

Qué debe saber...

- Los empleados del contratista **NO ESTÁN AUTORIZADOS** a realizar tareas si no han participado en la capacitación ambiental anual.
- **TODA** tarea que incluya movimiento de tierra o alteración de la vegetación, o la circulación fuera de los caminos/por tierra tienen Requisitos ambientales, incluidos los P1.
- Busque sus Requisitos ambientales en la Orden de trabajo.
- **DEBE LEER, ENTENDER y CUMPLIR sus Requisitos ambientales antes de programar o realizar las tareas.**
- Si no conoce los Requisitos ambientales, **INTERRUMPA LAS TAREAS** y llame al 833-723-2362.
- Realice únicamente las tareas autorizadas en sus Requisitos ambientales.
 - Cualquier cambio en los términos de las tareas debe someterse a evaluaciones ambientales adicionales antes de continuar.
- Confirme que los Requisitos ambientales previos a la actividad (p. ej., la inspección previa a las actividades, la programación de un monitor):
 - Estén incluidos en su cronograma.
 - Se hayan realizado y usted tenga la autorización del Departamento de Servicios Ambientales para comenzar las tareas.
- Revise los Requisitos ambientales durante **CADA** reunión en la que se expliquen las tareas a realizar (tailboard).
- Esté atento a las aves en proceso de anidación, los cursos de agua, etc. **INTERRUMPA** las tareas si hay nidos de aves activos, otras especies silvestres, cursos de agua (con agua presente o secos), recursos culturales/arqueológicos o cualquier otra inquietud ambiental.

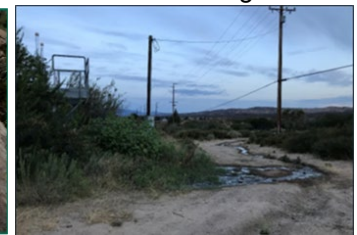
Tortuga del desierto



Recursos culturales



Curso de agua



Apéndice B-3 Construcción y mantenimiento de subestaciones

RESPONSABILIDADES AMBIENTALES DE LOS CONTRATISTAS

Construcción y mantenimiento de subestaciones

¿TIENE PREGUNTAS?

CONTACTE AL CENTRO DE NOTIFICACIONES AMBIENTALES AL

833-SCE-2ENC /

833-723-2362

o

**EnvironmentalRequirements
@sce.com**

EN CASO DE DERRAMES

DE MATERIALES PELIGROSOS,

CONTACTE A SU REPRESENTANTE DE EDISON Y AL

**844-GOT-SPIL O
GOTSPILL@SCE.COM**

Usted debe comunicar cualquier desviación respecto de los requisitos ambientales, derrames de materiales peligrosos, visitas de agencias reguladoras al área de trabajo y muertes de aves o nidos encontrados utilizando el

**ENVIRONMENTAL EVENT
REPORTING FORM**

(FORMULARIO DE REPORTE DE INCIDENTES AMBIENTALES)

Qué debe saber...

- Asegúrese de estar al día con la capacitación ambiental anual.
- **TODAS** las actividades de movimiento de tierra tienen requisitos ambientales.
- Busque sus Requisitos ambientales en la Orden de trabajo.
- **DEBE LEER, ENTENDER y CUMPLIR** sus Requisitos ambientales antes de programar o realizar la tarea.
- **INTERRUMPA LAS TAREAS** si no conoce los Requisitos ambientales y llame al 833-723-2362.
- **Realice únicamente las tareas autorizadas en sus Requisitos ambientales.**
 - Cualquier cambio en los términos de las tareas debe someterse a evaluaciones ambientales adicionales antes de continuar.
- **INTERRUMPA LAS TAREAS** si hay nidos de aves activos, otras especies silvestres, recursos culturales/arqueológicos o cualquier otra inquietud ambiental, y llame al 833-723-2362 si tiene alguna observación o pregunta.

Proyectos de construcción



Instalación de un transformador



Apéndice B-4 Construcción y mantenimiento de las instalaciones de generación

RESPONSABILIDADES AMBIENTALES DE LOS CONTRATISTAS

Construcción y mantenimiento de las instalaciones de generación

¿TIENE PREGUNTAS?

CONTACTE AL CENTRO DE NOTIFICACIONES AMBIENTALES AL

833-SCE-2ENC /

833-723-2362

o envíe un correo electrónico a

EnvironmentalRequirements@sce.com

EN CASO DE DERRAMES

DE MATERIALES PELIGROSOS,

CONTACTE A SU REPRESENTANTE DE EDISON Y AL

844-GOT-SPIL O
GOTSPILL@SCE.COM

Usted debe comunicar cualquier desviación respecto de los requisitos ambientales, derrames de materiales peligrosos, visitas de agencias reguladoras al área de trabajo y muertes de aves o nidos encontrados utilizando el

[ENVIRONMENTAL EVENT REPORTING FORM](#)

(FORMULARIO DE REPORTE DE INCIDENTES AMBIENTALES)

Qué debe saber...

- Asegúrese de haber realizado toda capacitación ambiental específica para el proyecto o el sitio (por ejemplo, capacitación WEAP, condiciones de la estación, etc.).
- **TODA** tarea tiene requisitos ambientales, incluyendo P1/Emergencias y las "llamadas".
- Busque sus Requisitos ambientales en la Orden de trabajo.
- **DEBE LEER, ENTENDER y CUMPLIR sus Requisitos ambientales, los cuales podrán incluir las condiciones de los permisos, antes de programar o realizar la tarea.**
- Si no conoce los Requisitos ambientales, **INTERRUMPA LAS TAREAS** y llame al 833-723-2362.
- Realice únicamente las tareas autorizadas en sus Requisitos ambientales.
 - Cualquier cambio en los términos de las tareas debe someterse a evaluaciones ambientales adicionales antes de continuar.
- Confirme que los Requisitos ambientales previos a la actividad (p. ej., la inspección previa a las actividades, la programación de un monitor):
 - Estén incluidos en su cronograma.
 - Se hayan realizado y usted tenga la autorización del Departamento de Servicios Ambientales para comenzar la tarea.
- Revise los Requisitos Ambientales durante **CADA** reunión en la que se expliquen las tareas a realizar (tailboard).
- **INTERRUMPA LAS TAREAS** si hay nidos de aves activos, otras especies silvestres, cursos de agua (con agua presente o secos), recursos culturales/arqueológicos o cualquier otra inquietud ambiental.

Instalación y compactación de roca base permeable



Nido activo



Apéndice B-5 Administración de instalaciones

RESPONSABILIDADES AMBIENTALES DE LOS CONTRATISTAS**Administración de instalaciones****¿TIENE PREGUNTAS?**

CONTACTE AL CENTRO DE NOTIFICACIONES AMBIENTALES AL

833-SCE-2ENC /

833-723-2362

o envíe un correo electrónico a

EnvironmentalRequirements@sce.com

EN CASO DE DERRAMES

DE MATERIALES PELIGROSOS,

CONTACTE A SU REPRESENTANTE DE EDISON Y AL

844-GOT-SPIL O GOTSPILL@SCE.COM

Usted debe comunicar cualquier desviación respecto de los requisitos ambientales, derrames de materiales peligrosos, visitas de agencias reguladoras al área de trabajo y muertes de aves o nidos encontrados utilizando el

ENVIRONMENTAL EVENT REPORTING FORM

(FORMULARIO DE REPORTE DE INCIDENTES AMBIENTALES)

Qué debe saber...

- Asegúrese de haber solicitado una Investigación de caracterización de residuos (WCI) para los proyectos que incluyan tareas de excavación y eliminación de tierra, concreto y/o asfalto.
- Asegúrese de haber solicitado un estudio sobre la presencia de asbesto y pintura con plomo para cualquier demolición y/o renovación de una construcción.
- **DEBE LEER, ENTENDER y CUMPLIR sus Requisitos ambientales, los cuales podrán incluir las condiciones de los permisos, antes de programar o realizar la tarea.**
- **Realice únicamente las tareas autorizadas en sus Requisitos ambientales.**
 - Cualquier cambio en los términos de las tareas debe someterse a evaluaciones ambientales adicionales antes de continuar.
- Confirme que los Requisitos ambientales previos a la actividad (p. ej., la inspección previa a las actividades o la programación de un monitor):
 - Estén incluidos en su cronograma.
 - Se hayan realizado y usted tenga la autorización del Departamento de Servicios Ambientales para comenzar la tarea.
- Revise los Requisitos Ambientales durante **CADA** reunión en la que se expliquen las tareas a realizar (tailboard).
- **INTERRUMPA LAS TAREAS** si hay nidos de aves activos, otras especies silvestres, cursos de agua (con agua presente o secos), recursos culturales/arqueológicos o cualquier otra inquietud ambiental.

Construcción/renovación de instalaciones



Jardinería en las instalaciones



Apéndice B-6 Proyectos grandes (con licencia federal y/o estatal)

RESPONSABILIDADES AMBIENTALES DE LOS CONTRATISTAS

Proyectos grandes (con licencia federal y/o estatal)

¿TIENE PREGUNTAS?

COMUNÍQUESE CON SU MONITOR MÁS CERCANO O USE LA LISTA DE CONTACTOS DE SU PROYECTO.

SI TIENE DUDAS, CONTACTE AL CENTRO DE NOTIFICACIONES AMBIENTALES AL

**833-SCE-2ENC /
833-723-2362**

PARA COMUNICARSE CON LA PERSONA INDICADA.

EN CASO DE DERRAMES DE MATERIALES PELIGROSOS: COMUNÍQUESE CON EL CONTACTO AMBIENTAL DE SU PROYECTO, NOTIFIQUE AL EQUIPO DEL PROYECTO DE SCE Y ENVÍE LOS INFORMES

Usted debe comunicar cualquier desviación respecto de los requisitos ambientales, derrames de materiales peligrosos, visitas de agencias reguladoras al área de trabajo y muertes de aves o nidos encontrados utilizando el

**ENVIRONMENTAL EVENT
REPORTING FORM**

(FORMULARIO DE REPORTE DE INCIDENTES AMBIENTALES)

Qué debe saber...

- Asegúrese de haber participado en el Worker's Environmental Awareness Program o WEAP (Programa de capacitación ambiental para los trabajadores).
- **Deben cumplirse TODAS** las Medidas de mitigación y las condiciones de los permisos. SI TIENE PREGUNTAS... HÁGALAS ANTES DE ACTUAR.
- **DEBE LEER, ENTENDER y CUMPLIR** sus Medidas de mitigación y las condiciones de los permisos antes de programar o realizar la tarea.
- Si no conoce las Medidas de mitigación y las condiciones de los permisos, **INTERRUMPA LAS TAREAS** y comuníquese con el monitor o el contacto ambiental más cercano de su proyecto.
- **Realice únicamente las tareas autorizadas en los términos aprobados y en las áreas de alteración aprobadas del proyecto.**
 - Los cambios en los términos de las tareas deben contar con la aprobación de SCE.
- Confirme los Requisitos ambientales previos a la actividad mediante los siguientes pasos:
 - COMPLETAR diariamente una proyección POD de 3 DÍAS.
 - OBTENER autorización para comenzar las tareas.
- Durante **CADA** reunión en la que se expliquen las tareas a realizar (tailboard), revise y asegúrese de que se entiendan los Requisitos ambientales y realice un recorrido a 360 grados alrededor del sitio para las Zonas ambientalmente sensibles (ESA).
- **INTERRUMPA LAS TAREAS** si hay nidos de aves activos, otras especies silvestres, cursos de agua (con agua presente o secos), recursos culturales/arqueológicos o cualquier otra inquietud ambiental.

Mejores prácticas de manejo (BMP)



Construcción de torres



Apéndice B-7 Actividades sobre el terreno no relacionadas con la construcción (patrullas, inspecciones, planificación/diseño, evaluaciones del sitio, y monitoreo/estudios ambientales)

RESPONSABILIDADES AMBIENTALES DE LOS CONTRATISTAS

Actividades sobre el terreno no relacionadas con la construcción

(patrullas, inspecciones, planificación/diseño, evaluaciones del sitio y estudios/monitoreo ambiental)

¿TIENE PREGUNTAS?

CONTACTE AL CENTRO DE NOTIFICACIONES AMBIENTALES AL

833-SCE-2ENC /

833-723-2362

**EnvironmentalRequirements
@sce.com**

EN CASO DE DERRAMES

DE MATERIALES PELIGROSOS,

CONTACTE A SU REPRESENTANTE DE EDISON Y AL

**844-GOT-SPIL O
GOTSPILL@SCE.COM**

Usted debe comunicar cualquier desviación respecto de los requisitos ambientales, derrames de materiales peligrosos, visitas de agencias reguladoras al área de trabajo y muertes de aves o nidos encontrados utilizando el

**ENVIRONMENTAL EVENT
REPORTING FORM**

(FORMULARIO DE REPORTE DE INCIDENTES AMBIENTALES)

Qué debe saber...

- Las actividades sobre el terreno en estas instrucciones incluyen las patrullas, inspecciones (terrestres y/o aéreas) y emplazamiento de estructuras para planificación/diseño.
- Si tiene preguntas sobre los tipos de autorizaciones requeridas para ingresar a terrenos públicos/gubernamentales, **INTERRUMPA LAS TAREAS** y llame al 833-723-2362 para obtener ayuda.
- Asegúrese de estar al día con la capacitación ambiental anual.
- Los vehículos y el equipo no deben salirse de los caminos existentes.
 - Se debe acceder a pie a las actividades fuera de los caminos.
 - Use solamente vehículos con ruedas de goma en los caminos existentes para cruzar arroyos/desagües con agua presente o secos dejando suficiente distancia del suelo.
- Si es necesario circular fuera de los caminos/por tierra, **INTERRUMPA LAS TAREAS** y llame al 833-723-2362 para obtener ayuda.
- Si necesita cortar/desbrozar vegetación para acceder a la inspección, **INTERRUMPA LAS TAREAS** y llame al 833-723-2362 para obtener ayuda.
- Los Requisitos ambientales no son obligatorios para este tipo de actividades sobre el terreno, pero debe mantenerse atento a su entorno.
- **INTERRUMPA LAS TAREAS** y llame al 833-723-2362 si tiene alguna observación o pregunta.



Tortuga eclosión



Apéndice B-8 Uso de equipos sujetos a las normativas sobre la calidad del aire (generadores portátiles, tanques de combustible, etc.)

RESPONSABILIDADES AMBIENTALES DE LOS CONTRATISTAS

Uso de equipos y actividades sujetos a las normativas sobre la calidad del aire (generadores portátiles, tanques de combustible, etc.)

¿TIENE PREGUNTAS?

CONTACTE AL CENTRO DE NOTIFICACIONES AMBIENTALES AL

833-SCE-2ENC /

833-723-2362

o

EnvironmentalRequirements
@sce.com

EN CASO DE DERRAMES DE MATERIALES PELIGROSOS,

CONTACTE A SU REPRESENTANTE DE EDISON Y AL

844-GOT-SPIL O
GOTSPILL@SCE.COM

Usted debe comunicar cualquier desviación respecto de los requisitos ambientales, derrames de materiales peligrosos, visitas de agencias reguladoras al área de trabajo y muertes de aves o nidos encontrados utilizando el [ENVIRONMENTAL EVENT REPORTING FORM](#)

(FORMULARIO DE REPORTE DE INCIDENTES AMBIENTALES)

Qué debe saber...

- **Cualquier equipo** u operación que emita o pueda emitir un contaminante del aire regulado debe contar con el correspondiente registro y/o permiso de calidad del aire.
- No lleve ningún equipo que esté registrado/autorizado por una agencia para la calidad del aire a las **estaciones generadoras a gas natural/diésel** de SCE sin informar al Centro de Notificación Ambiental (ENC).
- **Los generadores portátiles** de 50 BHP o más deben adquirirse y aprobarse usando el formulario Portable Generator Request Form (Solicitud de generador portátil) de SCE.
- Si se utilizan tanques de gasolina portátiles (de más de 250 galones), deben obtenerse los permisos de calidad del aire del distrito local antes de su puesta en funcionamiento.
- No ventile intencionalmente gases con alto potencial de calentamiento global como **refrigerante, halones y hexafluoruro de azufre (SF6)**. Llame al 844-GOT-SPIL en caso de emisión accidental.
- **Los productos químicos** deben ser aprobados por SCE antes de su uso.
- Cumpla con los planes de control del **polvo** del proyecto.
- Algunos proyectos de construcción pueden estar sujetos a una inspección y notificación de **asbesto**. Si no está seguro de los requisitos de inspección de asbesto de su proyecto o sospecha que hay material con contenido de asbesto, llame a **ENC**.
- No deje en ralentí durante más de 5 minutos **los vehículos pesados todoterreno que funcionan con diésel**.
- El polvo de la construcción, las emisiones de diésel, los olores y otros contaminantes del aire pueden convertirse en una **molestia**. Si un inspector del Distrito para la Calidad del Aire o los vecinos se quejan por alguna molestia, comuníquese con ENC.
- Compile todos los controles, registros e informes correspondientes requeridos por los permisos, los registros y las regulaciones.

Generador portátil



Vehículo pesado todoterreno



Apéndice B-9 Transporte, almacenamiento o tratamiento de materiales peligrosos

RESPONSABILIDADES AMBIENTALES DE LOS CONTRATISTAS**Transporte, almacenamiento o tratamiento de materiales peligrosos****¿TIENE PREGUNTAS?**

CONTACTE AL 844-GOT-
SPIL O
GOTSPILL@SCE.COM

EN CASO DE DERRAMES

DE MATERIALES
PELIGROSOS,

CONTACTE A SU
REPRESENTANTE DE
EDISON Y AL

844-GOT-SPIL O
GOTSPILL@SCE.COM

Usted debe comunicar cualquier desviación respecto de los requisitos ambientales, derrames de materiales peligrosos, visitas de agencias reguladoras al área de trabajo y muertes de aves o nidos encontrados utilizando el

[ENVIRONMENTAL EVENT
REPORTING FORM](#)

(FORMULARIO DE REPORTE DE INCIDENTES AMBIENTALES)

Qué debe saber...

- Llame al 911 en caso de grandes derrames o escapes que creen una emergencia debido a la posibilidad de un incendio, una explosión o un riesgo a la salud y la seguridad pública.
- Todas las emisiones al medio ambiente deben informarse a su representante de SCE y al 844-GOT-SPIL (844-468-7745).
- Los contratistas son responsables de la prevención de derrames y la limpieza de emisiones que hayan causado.
- Conserve siempre a mano un suministro adecuado de materiales para la contención de derrames a fin de tratar los escapes accidentales.
- Cumpla con los requisitos reglamentarios relacionados con la comunicación inmediata de los derrames a las agencias correspondientes (por ejemplo, OES, CUPA, NRC, etc.).
- Asegúrese de que los empleados estén debidamente capacitados en la respuesta a los derrames o utilice empresas expertas en la materia.

Limpieza de derrames en un canal



Fuga hidráulica vial



Apéndice B-10 Transporte, almacenamiento o tratamiento de residuos

RESPONSABILIDADES AMBIENTALES DE LOS CONTRATISTAS

Transporte, almacenamiento o tratamiento de residuos

¿TIENE PREGUNTAS?

EN CASO DE DERRAMES DE MATERIALES PELIGROSOS, CONTACTE A SU REPRESENTANTE DE EDISON Y AL 844-GOT-SPIL O GOTSPILL@SCE.COM

Residuos peligrosos

Aceite usado
Equipos eléctricos que contienen combustible

Residuos universales

Luces de alumbrado público
Residuos electrónicos
Pilas

Otros residuos regulados

Madera tratada
Neumáticos
Recipientes vacíos
Asbesto
Concreto/Asfalto
Tierra

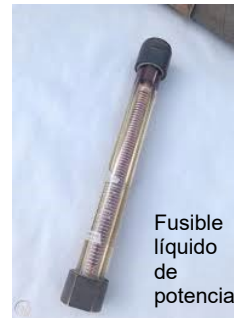
Usted debe comunicar cualquier desviación respecto de los requisitos ambientales, derrames de materiales peligrosos, visitas de agencias reguladoras al área de trabajo y muertes de aves o nidos encontrados utilizando el [ENVIRONMENTAL EVENT REPORTING FORM](#)

(FORMULARIO DE REPORTE DE INCIDENTES AMBIENTALES).

Qué debe saber...

- Si no conoce los requisitos de tratamiento de residuos, **INTERRUMPA LAS TAREAS** y llame al 844-GOT-SPIL o envíe un correo electrónico a GOTSPILL@sce.com.
- **INTERRUMPA LAS TAREAS** ante cualquier inquietud ambiental o de seguridad.
- Comuníquese con 844-GOT-SPIL o envíe un correo electrónico a GOTSPILL@sce.com para obtener ayuda sobre lo siguiente:
- Generación y tratamiento de desechos como tierra, asbesto, concreto, asfalto, baterías y neumáticos durante sus tareas.
- Limpiezas en las servidumbres de paso.
- Generación de residuos, incluidos residuos peligrosos, no peligrosos, universales o con PCB. El Departamento de Servicios Ambientales de SCE caracterizará adecuadamente los residuos.
- Si trabaja con equipos a combustible fabricados antes de 1980, prepárese para la presencia de bifenilos policlorados (PCB) que requieren un manejo, etiquetado y plazos de eliminación especiales.
- Únicamente el Departamento de Servicios Ambientales de SCE está autorizado a firmar los perfiles de eliminación de residuos peligrosos.
- La remoción de tierra, concreto o asfalto requiere una Investigación de caracterización de desechos (WCI) a cargo del Departamento de Servicios Ambientales de SCE que incluye los requisitos de tratamiento de desechos.
- La chatarra debe colocarse en los recipientes designados para ese propósito. No arroje desechos peligrosos, incluidos fusibles líquidos e interruptores de mercurio, en el contenedor de chatarra.
- Los restos de madera de postes (postes/brazos transversales) deben colocarse en los recipientes designados para ese propósito.
- Únicamente se pueden utilizar proveedores de transporte y eliminación de desechos peligrosos aprobados por SCE para transportar y eliminar desechos peligrosos.
- Separe los residuos para minimizar los desechos que se envían al vertedero y asegúrese de que todos los residuos se envíen a una instalación aprobada por SCE.
- Se debe enviar una copia de todos los documentos de envío a Manifests@sce.com. No firme un manifiesto en nombre de SCE si no está específicamente autorizado a hacerlo.
- Comuníquese con 844-GOT-SPIL para obtener ayuda al realizar limpiezas en servidumbres de paso.
- Debe leer, entender y cumplir los términos de su tarea y SCE Contractor Hazard Assessment and Safety Plan (Plan de seguridad y evaluación de riesgos del contratista de SCE) antes de empezar las tareas. **Realice únicamente las tareas autorizadas en sus términos.**

Tambores de residuos abandonados



Fusible líquido de potencia