



Rush Creek Project

FERC Project No. 1389

Updated Study Report Meeting

November 7, 2024

Please hold, we will begin shortly. Thank you for your patience and for muting your microphone.

Meeting Purpose

- Provide an update on overall study plan implementation progress – including on any modifications or variances to any Technical Study Plan (TSP).
 - Discussion will cover:
 - Completed Studies
 - Outstanding Study Elements
 - Study Variances

Agenda

1. Welcome and Introductions
2. Safety Moment
3. Meeting Tips
4. Relicensing Process and Schedule
5. Updated Study Report
6. Key Contacts
7. Adjourn

Welcome and Introductions

Relicensing Team Introductions

Relicensing Team

Southern California Edison

Matthew Woodhall, Relicensing Manager

Martin Ostendorf, Senior Manager

Seth Carr, Senior Supervisor, Generation-Operations and Maintenance

Audry Williams, Archaeologist and Cultural Lead

Matthew Paruolo, Government Relations Manager

Nicolas Von Gersdorff, SCE Dam Safety

Consultants

Julie Smith, Relicensing Project Manager (Stantec)

Consultant Team Technical Leads

Name	Role/Resource
Craig Addley (Kleinschmidt)	Aquatics: AQ 1, AQ 2, AQ 3, AQ 4, AQ 5, AQ 6 Full Decommissioning Study: DEC 1
Robyn Smith (JNA Environmental Consulting)	Aquatics: AQ 7
Crystal West (Stantec)	Cultural and Tribal: CUL 1, CUL 2, TRI 1
Patricia Sussman (Stantec)	Land: LAND 1 Environmental Justice: EJ 1
Patrick Kester (Stantec-GSA)	Land: LAND 2
Patricia Sussman (Stantec)	Recreation: REC-1
Janelle Nolan (JNA Environmental Consulting) Robyn Smith (JNA Environmental Consulting)	Terrestrial: TERR 1, TERR 2

Safety Moment: Tips for Walking on Ice

Appropriate Footwear – Wear shoes or boots with good traction – consider ice grips or spikes.

Short, Slow Steps – to maintain balance and reduce the risk of slipping.

Use Handrails – especially on stairs or elevated surfaces.

Avoid Carrying Heavy Loads – keep your hands free for balance.

Keep Your Hands Out of Your Pockets – to maintain balance and to use your arms for support, if needed.

Plan Your Route – Use well-trodden paths. Avoid shortcuts.



Meeting Tips

General Rules of Engagement

- Questions and comments are welcome, but please time your comment or question to end of the presentation for each agenda topic.
 - Additional questions and comments welcome at the end of the meeting.
- Allow each person to speak before speaking a second time on an issue.
- Please silence your cell phone.
- Refrain from sidebar discussions.
- Assume positive intent.

Meeting Tips – Virtual Attendees

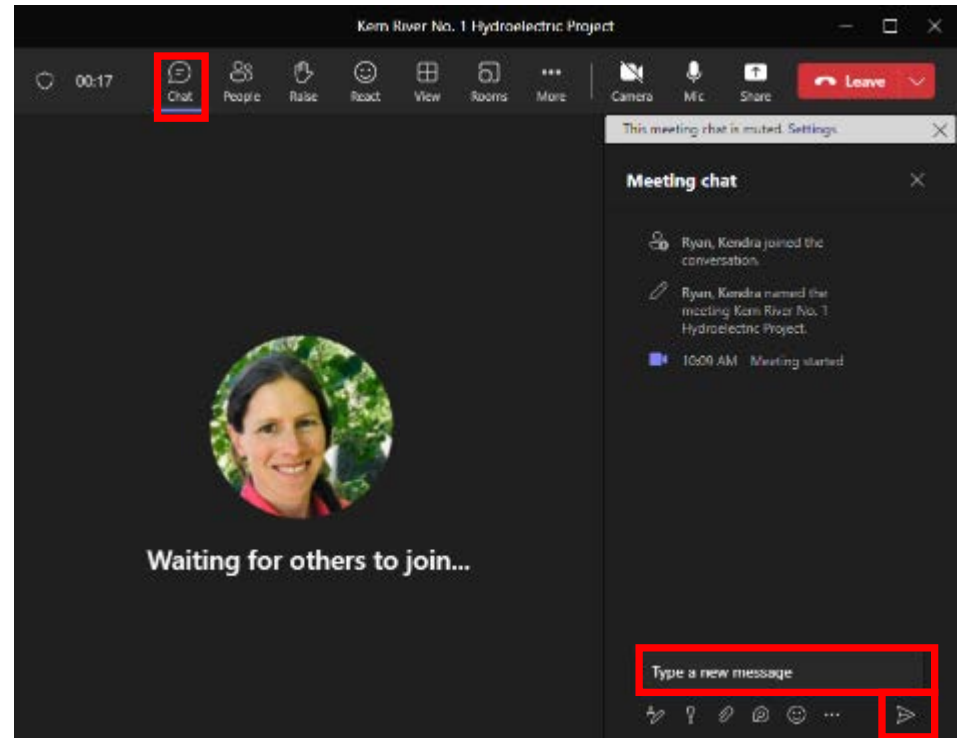
- Please remain on mute unless called on
- Turn off camera



- Consider shutting down other background programs for best meeting audio/viewing quality

Meeting Tips – Virtual Attendees

- Virtual – to submit in writing
 - Utilize the chat feature during the presentation to submit questions/ comments
 - Questions submitted via the chat feature will be answered at the end of each agenda topic, as time allows



Meeting Tips – Virtual Attendees

Virtual: to submit a question/comment verbally:

- Use the “Raise Hand” feature to indicate you would like to ask a question verbally



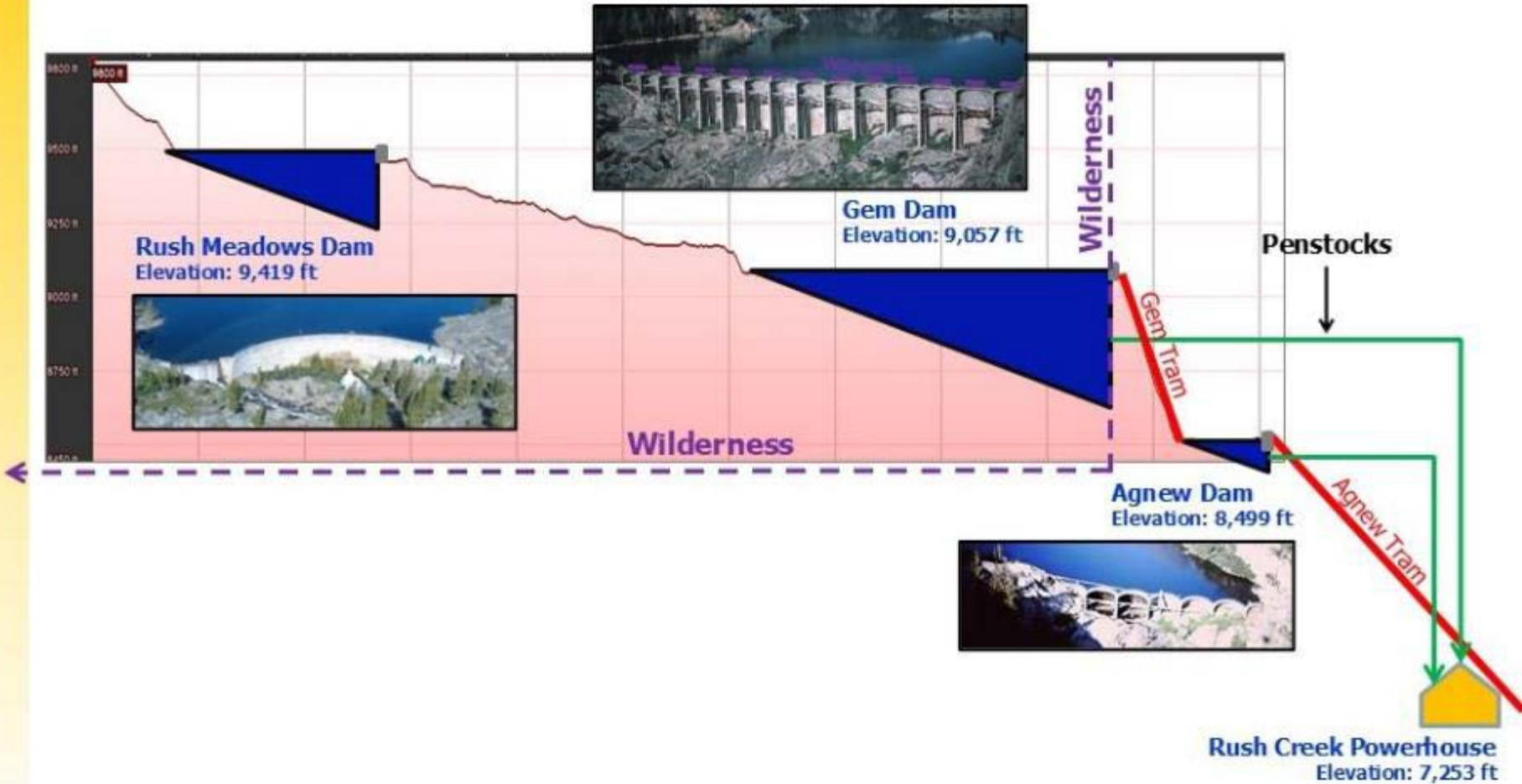
- Please wait to be called on and then unmute yourself
 - Introduce yourself (name and affiliation) prior to speaking

Relicensing Process and Schedule

Rush Creek Project Overview

- Project Location:
 - Eastern slope of the Sierra Nevada in Mono County near June Lake
- Primary Project Facilities Include:
 - Three dams and associated reservoirs
 - Water conveyance system
 - Powerhouse (total installed capacity of 13.01 megawatts)
 - Two trams
- FERC License:
 - Expires January 31, 2027

Rush Creek Project Overview



Relicensing Process Milestones - Complete

Milestone	Date	Public Meeting(s)	Public Comment Period
SCE Files NOI and PAD	12/16/2021	✓	
FERC Issues Scoping Document 1	2/14/2022	✓ (FERC Scoping)	✓
SCE Files Proposed Study Plan	5/26/2022	✓ (PSP, TWGs)	✓
FERC Issues Scoping Document 2	5/27/2022		
SCE Files Revised Study Plan	9/23/2022		✓
FERC Issues Study Plan Determination	10/26/2022		
SCE Conducts First Year Studies	2023		
SCE Files Initial Study Report	10/26/2023	✓	✓
SCE Distributes TSRs to Interested Stakeholders (+ TWG meetings)	Feb–Jul 2024	✓ (TWGs)	✓
SCE Conducts Second Year Studies	2024		
SCE Files Draft License Application	8/28/2024		✓
SCE Files Updated Study Report	10/25/2024	✓	✓

Draft License Application

SCE's relicensing website:
www.sce.com/rushcreek

FERC's eLibrary:
<https://www.ferc.gov/ferc-online/elibrary>

Deadline to file comments:
November 26, 2024

How to file a comment:
www.ferc.gov/how-file-comment

Draft License Application

Rush Creek Project Draft License Application (Public Information)

[Cover Letter and Distribution List](#)

Volume I (Public)

[Initial Statement, Exhibits A, B, C, D, G, and H](#)

Volume III (Public)

[Exhibit E, Environment Exhibit](#)

Exhibit E, Supporting Document A, Technical Study Reports

- [Introduction](#)
- [AQ 1 – Instream Flow](#)
- [AQ 2 – Hydrology](#)
- [AQ 3 – Water Temperature](#)
- [AQ 4 – Water Quality](#)
- [AQ 5 – Geomorphology](#)
- [AQ 6 – Fish Population and Barriers](#)
- [AQ 7 – Special-status Amphibians](#)
- [LAND 1 – Aesthetics](#)
- [LAND 2 – Noise](#)
- [REC 1 – Recreation](#)
- [TERR 1 – Botanical](#)
- [TERR 2 – Wildlife](#)
- [EJ 1 – Environmental Justice](#)
- [DEC 1 – Full Decommissioning](#)

Relicensing Process Milestones - Upcoming

Milestone	Date	Public Meeting(s)	Public Comment Period
SCE Files Final License Application	1/31/2025		
FERC's Post-Filing Activity			
Ready for Environmental Analysis	TBD		✓
Draft EA/EIS	TBD		✓
Final EA/EIS	TBD		
License Order	TBD		

Updated Study Report

Updated Study Report

- Updated Study Report filed on Oct 25, 2024
- Updated Study Report components:
 - Cover Letter
 - Attachment A: Distribution List
 - Attachment B: TSR Distribution Dates
 - Attachment C: TSP Implementation Summary
- Available for download:
 - www.sce.com/rushcreek
 - www.ferc.gov/docs-filing/elibrary.asp

17 Technical Study Plans (TSP)

Aquatic Resources

AQ 1 – Instream Flow

AQ 2 – Hydrology

AQ 3 – Water Temperature

AQ 4 – Water Quality

AQ 5 – Geomorphology

AQ 6 – Fish Population and Barriers

AQ 7 – Special-status Amphibians

Cultural and Tribal Resources

CUL 1 – Built Environment

CUL 2 – Archaeology

TRI 1 – Tribal Resources

Land Resources

LAND 1 – Aesthetics

LAND 2 – Noise

Recreation Resources

REC 1 – Recreation

Terrestrial Resources

TERR 1 – Botanical Resources

TERR 2 – Wildlife Resources

Other

EJ 1 – Environmental Justice

DEC 1 – Full Decommissioning

Complete



All study elements completed and reported on in the DLA for the following:

- AQ 2 – Hydrology
- AQ 3 – Water Temperature
- REC 1 – Recreation
- TERR 1 – Botanical Resources
- EJ 1 – Environmental Justice

Outstanding Study Elements

Outstanding Elements to be Completed

CUL 1 – Built Environment

CUL 2 – Archaeology

TRI 1 – Tribal Resources



Outstanding Reporting Based on Additional Data Collected in 2024

AQ 1 – Instream Flow

AQ 4 – Water Quality

AQ 5 – Geomorphology

AQ 6 – Fish Population and Barriers

AQ 7 – Special-status Amphibians

LAND 1 – Aesthetics

LAND 2 – Noise

TERR 2 – Wildlife Resources

DEC 1 – Full Decommissioning

Outstanding Elements to be Completed

Cultural and Tribal Studies (CUL 1, CUL 2 and TRI 1)

- **Consultation and Concurrence** on the findings of the studies by the Inyo National Forest (INF), American Indian Tribes (Tribes), State Historic Preservation Officer (SHPO) and other stakeholders (as applicable) is expected to continue into 2025.
- **National Register of Historic Places (NRHP)**
Eligibility: Specific to CUL 2 – Archaeology, NRHP evaluation for sites that require sub-surface testing will not be complete by January 2025; a plan and schedule for evaluation will be included in the HPMP.

Outstanding Elements to be Completed

Cultural and Tribal Studies (CUL 1, CUL 2 and TRI 1)

- **Historic Properties Management Plan (HPMP):**
 - A Draft HPMP will be included in the FLA.
 - Consultation with the INF, SHPO, and Tribes on the HPMP will continue into 2025.
 - The HPMP will include:
 - Measures to avoid, minimize, or mitigate adverse effects to cultural and Tribal resources affected by continued O&M.
 - NRHP Evaluation Plan for unevaluated resources.
 - Implementation procedures such as management roles and responsibilities, Native American and agency consultation, project review requirements, annual meetings and reporting, and processes for revision of the HPMP and dispute resolution.

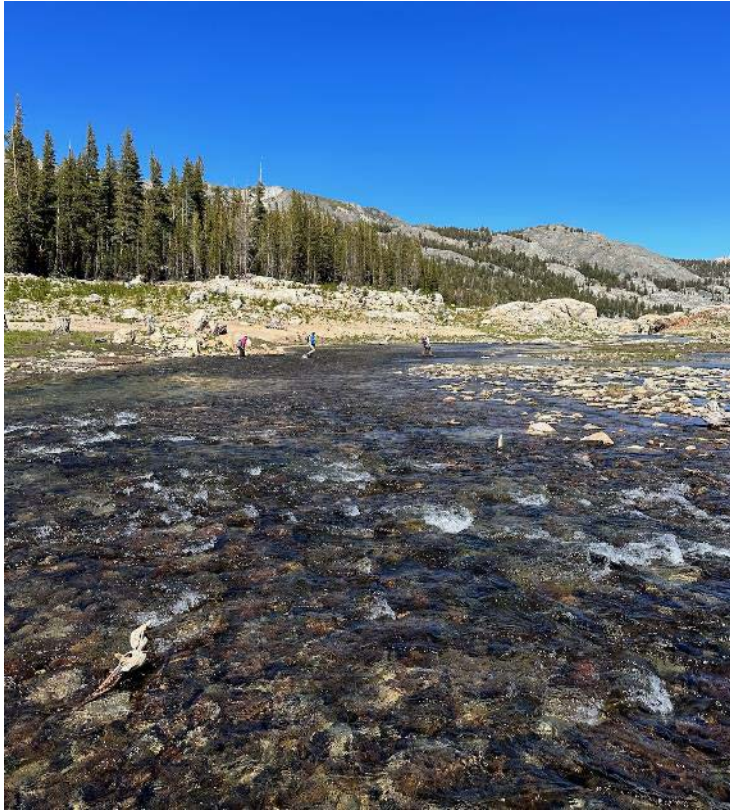
Outstanding Reporting Based on Data Collected in 2024

AQ 1 – Instream Flow and AQ 5 – Geomorphology

- Evaluation of potential Rush Creek Channel restoration in Waugh lakebed
 - LIDAR lakebed topography
- Evaluation of potential enhancement of Rush Creek and South Rush Creek
 - Detailed channel modeling
- Rush Creek at Silver Lake Inlet
 - HEC-RAS hydraulic and sediment transport model
 - Sediment Characterization



Outstanding Reporting Based on Data Collected in 2024



AQ 4 – Water Quality

- Based on FERC's determination on requests for study modifications, an additional year of field data (second year of data) was collected during 2024
- Results for 2024 are being compiled and analyzed.

Outstanding Reporting Based on Data Collected in 2024

AQ 6 – Fish Population and Barriers

- Based on FERC's determination on requests for study modifications, an additional year of field data (second year of data) was collected during 2024 at the four stream-sampling reaches downstream of Agnew Dam
- Similar results to 2023 based on preliminary compilation of data
 - findings both years included brown trout, brook trout, and rainbow trout
 - no LCT detected



Outstanding Reporting Based on Data Collected in 2024

AQ 7 – Special-status Amphibians

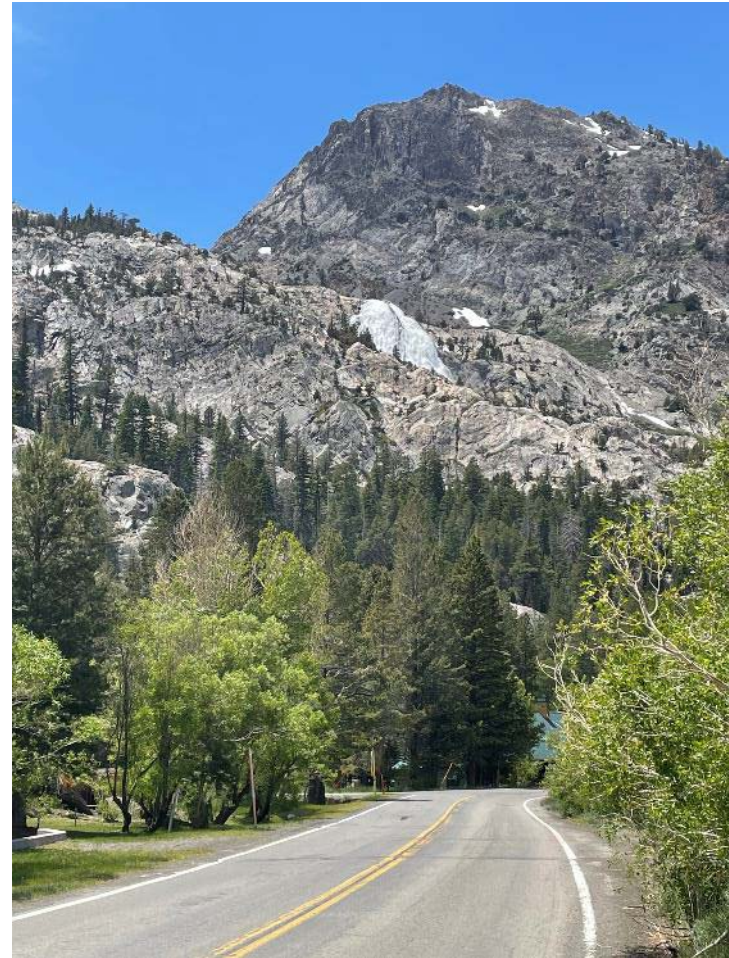
- Based on FERC's determination on requests for study modifications, an additional year of field data (second year of data) was collected during 2024
- Notable findings:
 - Two *Anaxyrus* tadpoles observed in Waugh lakebed
 - Consultation initiated with CDFW/USFWS



Outstanding Reporting Based on Data Collected in 2024

LAND 1 – Aesthetics

- Additional photo documentation of flow conditions over Horsetail Falls



Outstanding Reporting Based on Data Collected in 2024



LAND 2 – Noise

- Additional ambient noise measurements taken at Points of Interest in June and August

Outstanding Reporting Based on Data Collected in 2024

TERR 2 – Wildlife

- Raptor nest surveys
- Bat roost surveys and seasonal use surveys



Outstanding Reporting Based on Data Collected in 2024

DEC 1 – Full Decommissioning

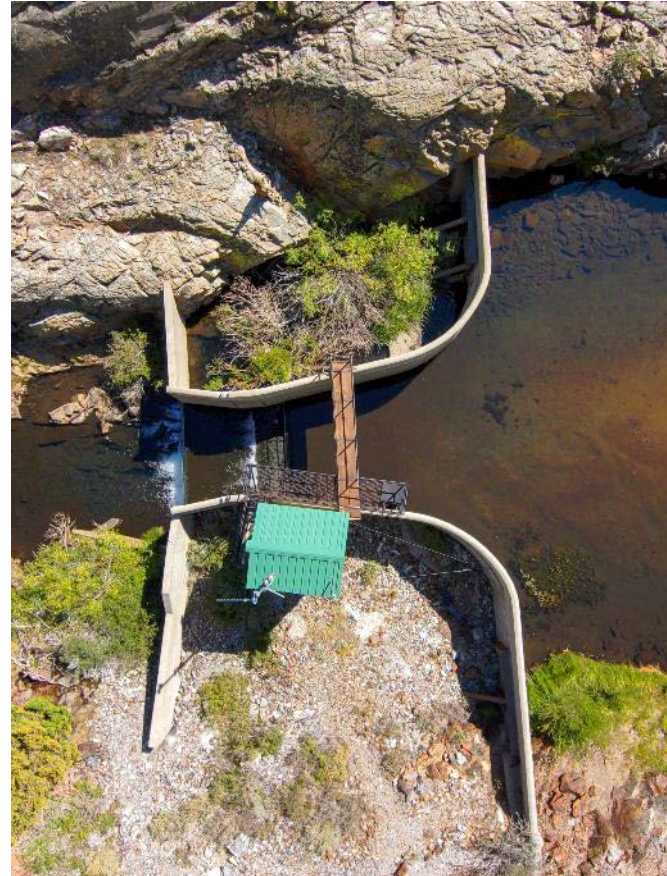
- Characterization of the types and quantities of accumulated sediment behind each dam



Variance

The following studies had a change from the methodology identified in the TSP

- AQ 4 – Water Quality
- LAND 1 – Aesthetics
- REC 1 – Recreation



Variance

AQ 4 – Water Quality

- The study plan identified monthly profile sampling for Gem, Agnew, and Silver lakes from June to October. In 2023, Gem and Agnew lakes were sampled starting in July as soon as the melting snowpack allowed access to the lakes; sampling continued through October. In 2024, sampling began in June in accordance with the TSP.
- Due to the remote nature of much of the Project area, alkalinity measurements were collected as part of the spring runoff and late summer/early fall base flow water quality grab samples and analyzed at a state-certified laboratory rather than measured in the field.

Variance

AQ 4 – Water Quality (continued)

- During the July 2023 sampling event, the temperature/ conductivity sensor malfunctioned during reservoir profile measurements. Troubleshooting in the field partially mitigated the issue; however, temperature and conductivity were not recorded for one of the two reservoir profile locations on Gem Lake in July of 2023. All reservoir profile parameters were recorded at all sampling sites in 2024.
- Bacterial water quality samples were tested for *Escherichia coli* (*E. coli*) in addition to total coliform and fecal coliform specified in the TSP.
- Due to a laboratory processing error, fecal coliform analysis was not performed for one of the five bacterial sampling events/samples collected at Agnew and Gem lakes in 2023. Total coliform and *E. coli* analyses were performed. All bacterial sampling event/samples were performed in 2024.

Variance

AQ 4 – Water Quality (continued)

- For some parameters, Western Environmental Testing Laboratory (WETLAB) used different but equivalent analysis methods to those specified in the Water Quality TSP (Standard Methods instead of Environmental Protection Agency [EPA] methods). The methods are summarized in Table AQ 4-1 of the TSR. EPA recognizes the Standard Methods analyses as equivalent.
- Due to the remote nature of the upper portions of the Project area (i.e., above Agnew Dam), hold times for some samples were exceeded in both the spring runoff period and the late summer/early fall base flow periods.

Variance

LAND 1 – Aesthetics

- The TSP identified the following target flows for photo documentation: (1) a spill event; (2) 70 to 85 cfs; (3) 13 to 20 cfs; (4) 5 to 8 cfs; and (5) 1 cfs (current minimum instream flow release requirement). All these flows were photo documented with the following variations noted:
 - a “spill event” was defined as spring runoff conditions with all Project valves and gates open;
 - a variety of flows in the 9 to 10 cfs range were photo documented to satisfy the 5 to 8 cfs range flow condition; and
 - flows in the 2 cfs range were photo documented to satisfy the minimum flow condition (1 cfs).

Variance

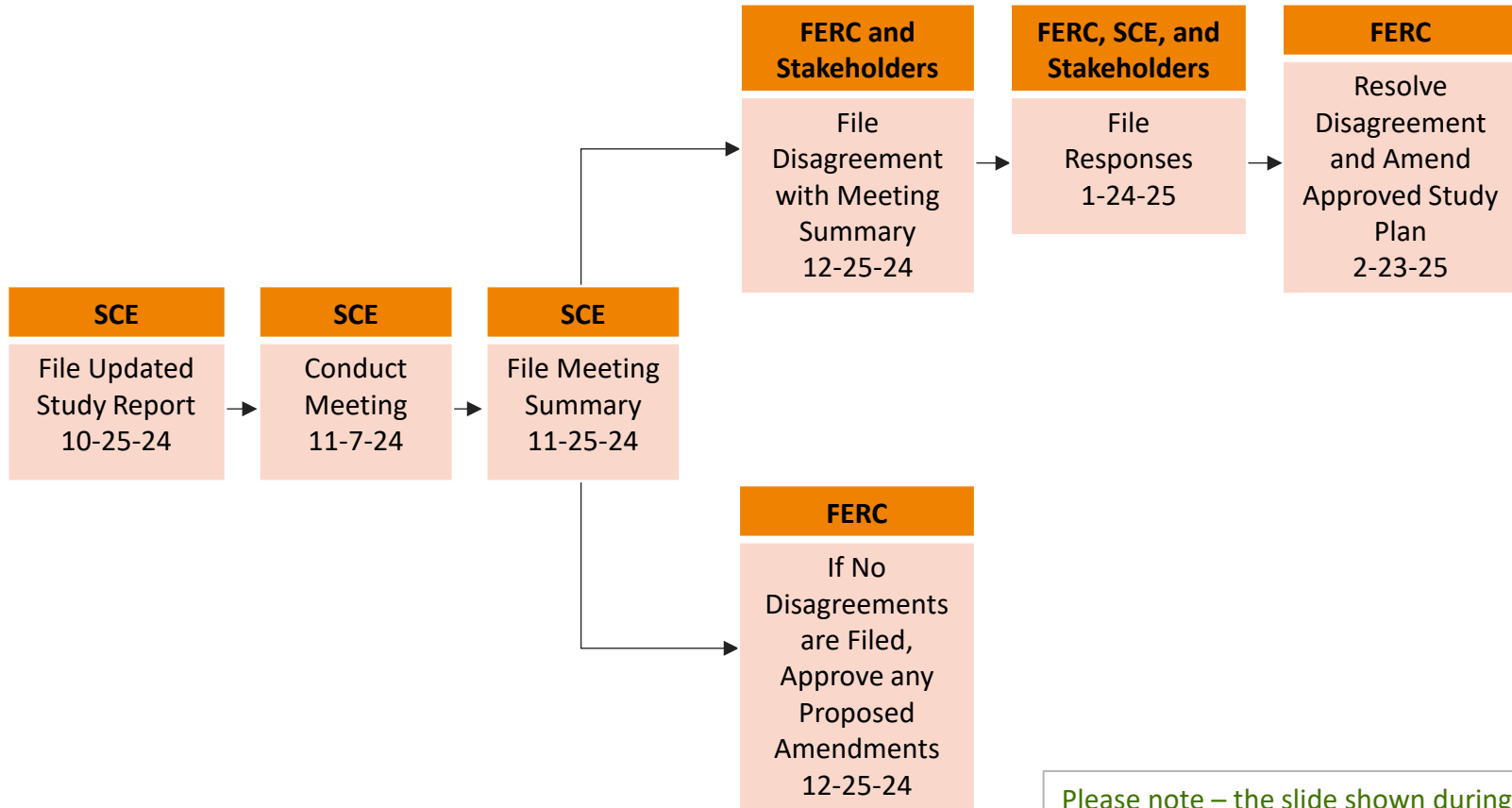
REC 1 – Recreation

- The INF-provided wilderness permit data for the period from fall of 2018 through December 2022. Data was not available prior to the fall of 2018. Therefore, the analysis reflects 4+ years of data rather than 5 years of data as indicated in the Recreation TSP.
- The self-registration box was installed on May 24, 2023 and removed on November 1, 2023 (165 days). The TSP specified installation commensurate with the beginning of the INF wilderness permit quota season (May 1), however, the trail was not accessible until later in May due to residual snowpack preventing access.

TSP Implementation Summary as of Oct 2024

Technical Study	Complete	Outstanding Study Element/Reporting	Variance
AQ 1 – Instream Flow		X	
AQ 2 – Hydrology	X		
AQ 3 – Water Temperature	X		
AQ 4 – Water Quality		X	X
AQ 5 – Geomorphology		X	
AQ 6 – Fish Population and Barriers		X	
AQ 7 – Special-status Amphibians		X	
CUL 1 – Built Environment		X	
CUL 2 – Archaeology		X	
TRI 1 – Tribal Resources		X	
LAND 1 – Aesthetics		X	X
LAND 2 – Noise		X	
REC 1 – Recreation	X		X
TERR 1 – Botanical Resources	X		
TERR 2 – Wildlife Resources		X	
EJ 1 – Environmental Justice	X		
DEC 1 – Full Decommissioning		X	

Updated Study Report Process per FERC ILP Regulations



Please note – the slide shown during the USR meeting on Nov 7, identified earlier dates for some of the filing deadlines. This slide corrects that error. The dates shown here are consistent with the FERC-issued Scoping Document 2.

18 CFR §5.15(c)

Where to Get Information:

Register online to be notified via email of new filings and issuances related to the Rush Creek Project

- www.ferc.gov/esubscribenow.htm

Access documents filed related to the Rush Creek Project

- FERC's eLibrary: <https://www.ferc.gov/ferc-online/elibrary>
- SCE's relicensing website: www.sce.com/rushcreek

Submit comments at:

- FERC's eFiling: <https://ferconline.ferc.gov/QuickComment.aspx>

Key Contact Information

Name	Role/Resource	E-mail	Phone
Federal Energy Regulatory Commission			
Quinn Emmering	Project Coordinator & Wildlife Biologist	quinn.emmering@ferc.gov	(202) 502-6382
Southern California Edison			
Matt Woodhall	Generation - Regulatory Support Services	matthew.woodhall@sce.com	(626) 302-9596