

Southern California Edison
2025-WMPs – 2025-WMPs

DATA REQUEST SET S P D - S C E - 0 0 1

To: SPD

Prepared by: Eghosa Obasohan

Job Title: Senior Advisor

Received Date: 9/11/2024

Response Date: 9/16/2024

Question 03.a-b:

SCE updated its Covered Conductor Inspection program. Inspectors check for abrasion from vegetation contact; punctures from lightning strikes; and determine water intrusion by checking for corrosion.

3a: How do inspectors look for punctures from lightning strikes? Please show with the help of photos and inspection job aids/checklist

3b: How does SCE check or corrosion in Covered Conductor?

Response to Question 03.a-b:

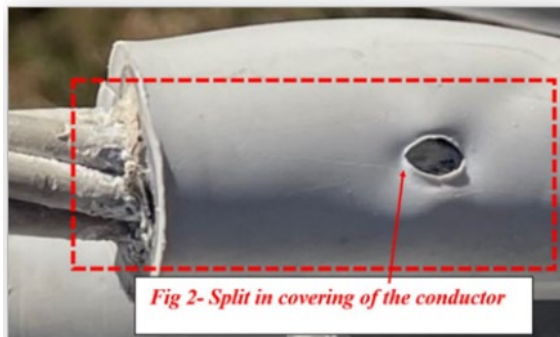
3a. With respect to covered conductor, a puncture caused by a lightning strike is an example of surface damage. SCE's distribution inspection form includes questions related to covered conductor conditions such as burning, tracking, bulging, cracking or any other type of surface damage. SCE inspectors look for surface damage on the outer jacket of the conductor by visually inspecting from the ground with the assistance of binoculars, handheld cameras, and/or drones.

The training image below shows an example of surface damage, although it may not be specific to lightning strike as the cause. Inspectors capture close-up photos when they identify any form of surface damage to the covered conductor.

Covered Conductor Visible Signs of Damage - Cracking

- Corrosion may eventually build up to the point where visible signs of insulation cracking or tearing occur
- create an **E1 P1** for conditions of bulging similar to the pictures shown
- **REPLC CORR PRI CBL/CND POLE**

This is
a P1



3b. SCE's Distribution Overhead Detail Inspection program includes questions related to the condition of primary conductor, including covered conductor. As part of that program, inspectors look for conditions such as corrosion (please refer to the sample question below). If any damage is observed, it is reported for remediation. Inspectors visually inspect from the ground, with the assistance of binoculars, handheld cameras and drones for closer review of primary cable.

Sample Question:

(AERIAL/GROUND) For covered conductor, are there visible signs of tracking or damage on the jacket?

- A. Burning (Notification Required)
- B. Tracking (Notification Required)
- C. Bulging (Notification Required)
- D. Cracking (Notification Required)
- E. Other Damage (Notification Required)
- F. No damage observed

In addition, SCE's 2024 covered conductor inspections pilot involves qualified electrical workers removing wildlife covers to inspect the conductor material at close proximity to where the covering has been stripped.