

Suggested Plants

The following is a suggested list of shrubs, ground cover, perennials, and annuals that are commonly used when landscaping around utility equipment. Contact your local nursery or arborist for additional planting guidance.

Plant Species	Common Name
Abelia Grandiflora	Abelia
Acanthus Mollis	Bear's Breeches
Agapanthus "Midnight Blue"	Lily of the Nile
Buxus Microphylla var Japonica	Japanese Boxwood
Hemerocallis SPP	Daylily
Impatiens Walleriana	Busy Lizzy
Lavandula Augustifolia	Lavender
Nanadina Domestica	Heavenly Bamboo
Phormium Tenax	New Zealand Flax
Rosmarius Officinalis	Rosemary
Salvia Greggii	Autumn Sage

Getting Help

If you have any questions please contact one of the SCE representatives:

Insert
Business Card
Here

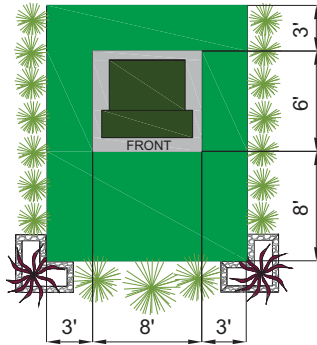
Landscaping Around Commercial Pad-mounted Transformers

Pad-mounted transformers are the standard equipment for providing electrical power to commercial and industrial facilities such as office buildings, hospitals, restaurants and retail stores. In addition to pad-mounted transformers there are other types of pad-mounted equipment that can be used to help serve commercial areas. Refer to the **Aboveground Equipment Aesthetics Improvement Manual**, shown in the www.sce.com website for additional landscaping guidelines.



Required Clearances Around Pad-mounted Transformers

Transformers are a critical part of SCE's electrical system. It is mandatory that when landscaping around transformers the following operating and clearance requirements are maintained, as shown in the scheme below.



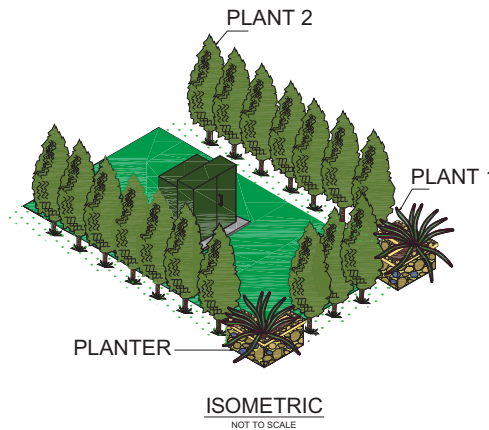
3' clearance on sides and back of the equipment. 8' clearance in front of the equipment. Landscaping irrigation system will be installed so that they do not spray on the equipment.

Landscaping Guidelines

The customer will own and maintain all landscaping materials used to aesthetically screen pad-mounted equipment. In order to maintain the required clearances, consider the size and spread that shrub or tree will reach at maturity when selecting the proper shrub or tree for landscaping. In addition, select landscaping plants whose roots, vines, and branches will not grow under or into **Edison** structures or equipment. Contact your local nursery or arborist for guidance.

Screen Effect

There could be local laws and ordinances that may apply to aesthetic screening of utility equipment. Contact your local government agency for guidance. The goal of screen effects is to incorporate the transformer into the surrounding environment, making it less visible. For example, if you are driving along a busy street where the equipment is visible, you can create a screen so it can't be easily seen.



Phormium
Atropurpureum
Plant 1



Junipero
Conferta
Plant 2



Natural Rock
Planter
Planter

The example screen effect shown above uses plants to screen a pad-mounted transformer. There are other kinds of screening that can be used, including but not limited to block walls, lattice fencing and the more traditional panel fences.

Hedges, Lawns, and Plants Used as Screen Effects



Hedges are a type of screen effect that is often used to aesthetically screen pad-mounted equipment. The beauty of their foliage, color

and texture can be aesthetically pleasant. Selecting the right plant can help create the shape you want for hedge screening. Boxwoods are one example of a shrub that can create a hedge screening. Be sure to maintain access and clearance to the equipment.



Lawns and Plants

Lawns are the most popular ground cover, due to its low maintenance. There are other plants that can be used in place of lawns

that provide enhanced foliage, textures, colors and flowers. However when selecting plants over lawns to use as ground cover you may want to consider the care and maintenance required to assure proper clearances are kept around the equipment.

Call Dig Alert Hotline Before Digging



There could be various underground electric cables owned by SCE that are located near pad-mounted transformers. In order to prevent the risk of cutting into an underground electric cable, contact the USA Dig Alert Hotline of California at least 48 hours prior to digging. The hotline number is 811 or 1-800-227-2600, 1-800-422-4133.