

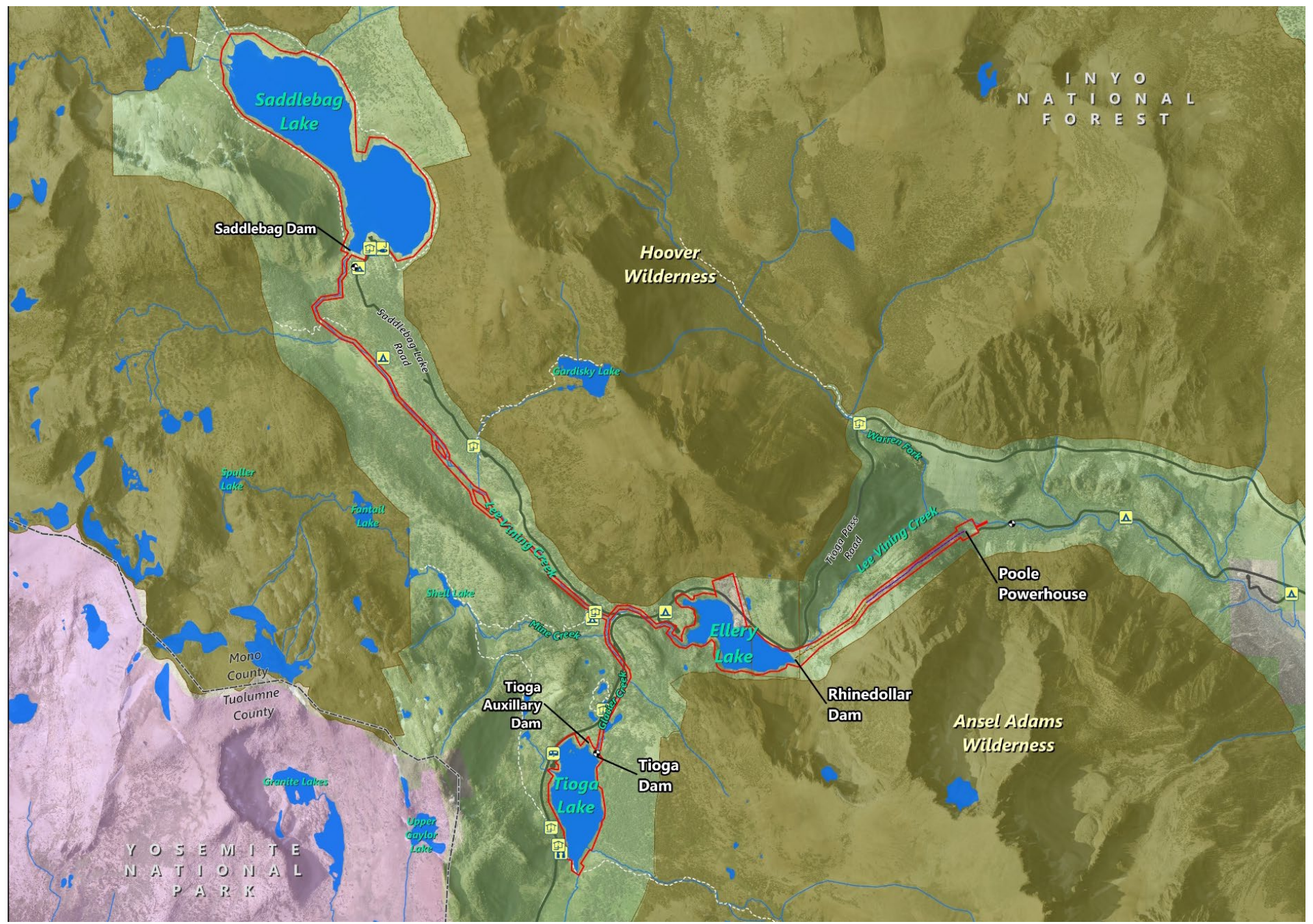
# Lee Vining Hydroelectric Project

## FERC No. 1388



Site Visit Booklet

September 28, 2021



# Lee Vining Hydroelectric Project

- Federal Energy Regulatory Commission (FERC) License
  - FERC Project No. 1388
  - Issued February 1997
  - 30 year license term
  - Expires January 31, 2027
- Key Outcomes from Previous Relicensing
  - Established minimum release flows with Project operations (i.e., generation) while protecting aquatic resources
  - Conducted focused studies/evaluation on key resource topics
  - Established resource protection measures



# Lee Vining Hydroelectric Project

- Located in the eastern slope of the Sierra Nevada primarily on Inyo National Forest lands about 9 miles upstream of Lee Vining, CA
- Situated on Lee Vining Creek, in Mono County
- The Project maintains 3 reservoirs and 4 dams:
  - Saddlebag Dam and Lake
  - Tioga Dam, Auxiliary Dam, and Lake
  - Rhinedollar Dam and Ellery Lake



Aerial Overview of Lee Vining Project Area

# Nearby Facilities and Amenities

- In addition to the Project facilities on the tour, there are a number of facilities and amenities that are in or near the Project area.
- These facilities are not currently included in the FERC license and are outside of the FERC boundary.
- As part of relicensing their relationship to the project will be evaluated and discussed.

# Project Facilities – Saddlebag Dam and Lake

- Saddlebag Dam and Lake
  - Headwaters of Lee Vining Creek
  - 297-acre reservoir



# Project Facilities – Saddlebag Dam and Lake

- Saddlebag Dam and Lake
  - Headwaters of Lee Vining Creek
  - 297-acre reservoir



# Project Facilities – Saddlebag Dam and Lake

Inflow area





# Nearby Recreation Facilities – Saddlebag Lake Day Use Area and Campground (USFS)



# Nearby Recreation Facilities – Saddlebag Lake Group Campground and Trailhead area (USFS)



# Yosemite Toad Habitat at Saddlebag Lake



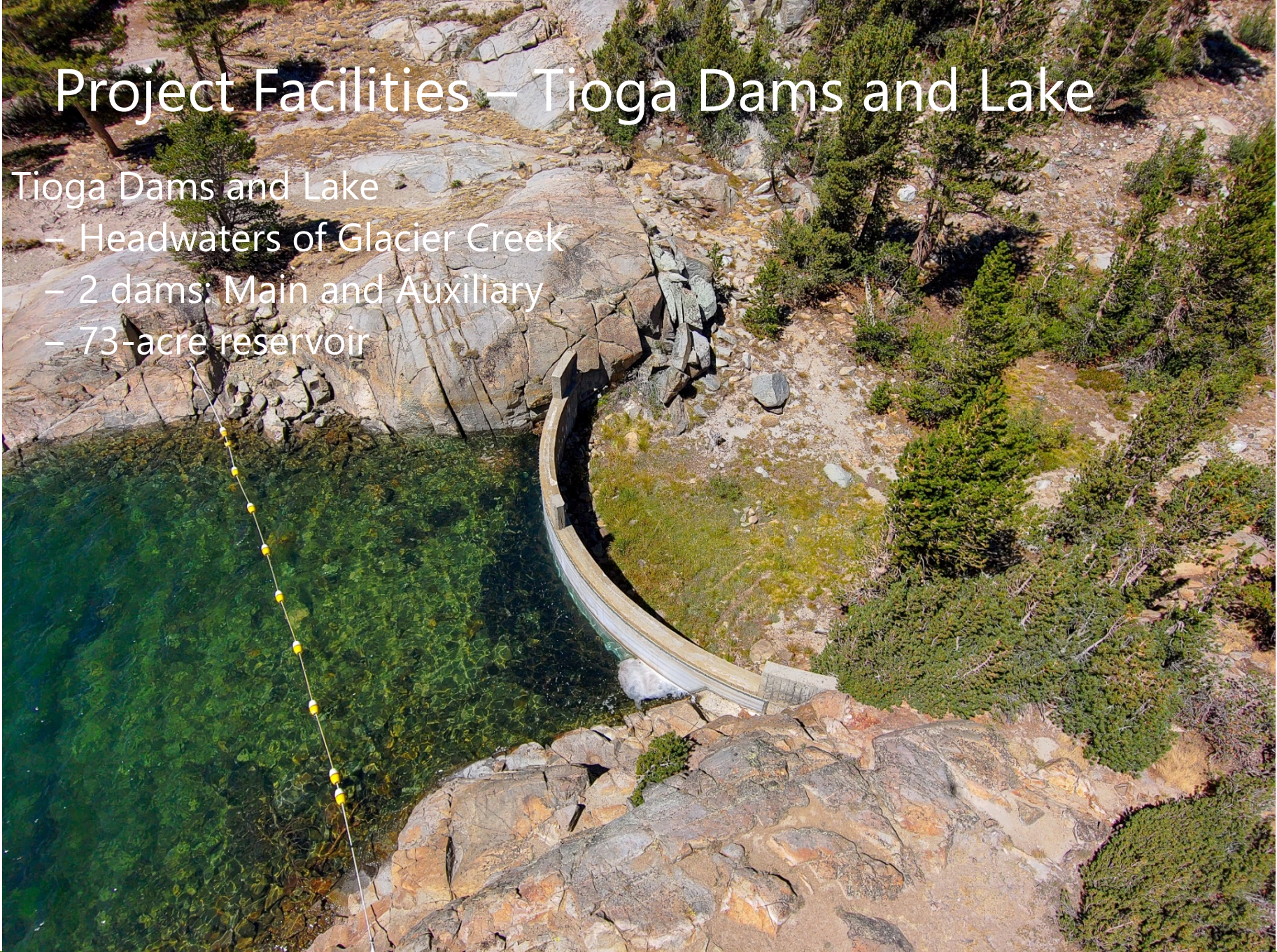
# Yosemite Toad Habitat at Saddlebag Lake



# Project Facilities – Tioga Dams and Lake

## Tioga Dams and Lake

- Headwaters of Glacier Creek
- 2 dams: Main and Auxiliary
- 73-acre reservoir



# Project Facilities – Tioga Dams and Lake

## Tioga Dams and Lake

- Headwaters of Glacier Creek
- 2 dams: Main and Auxiliary
- 73-acre reservoir



# Project Facilities – Tioga Dams and Lake

- Inflow area



# Nearby Recreation Facilities – Junction Campground (USFS)





# Nearby Recreation Facilities – Tioga Lake Campground (USFS)



# Nearby Recreation Facilities – Tioga Lake Overlook



# Project Facilities – Rhinedollar Dam and Ellery Lake

- Rhinedollar Dam and Ellery Lake
  - Tioga and Saddlebag drain into here
  - 61-acre reservoir



# Project Facilities – Rhinedollar Dam and Ellery Lake

- Rhinedollar Dam and Ellery Lake
  - Tioga and Saddlebag drain into here
  - 61-acre reservoir



# Project Facilities – Rhinedollar Dam and Ellery Lake





# Project Facilities – Valve House

# Project Facilities – Rhinedollar Dam and Ellery Lake

- Inflow area



# Nearby Recreation Facilities – Ellery Lake Campground (USFS)





# Project Facilities – Poole Powerhouse

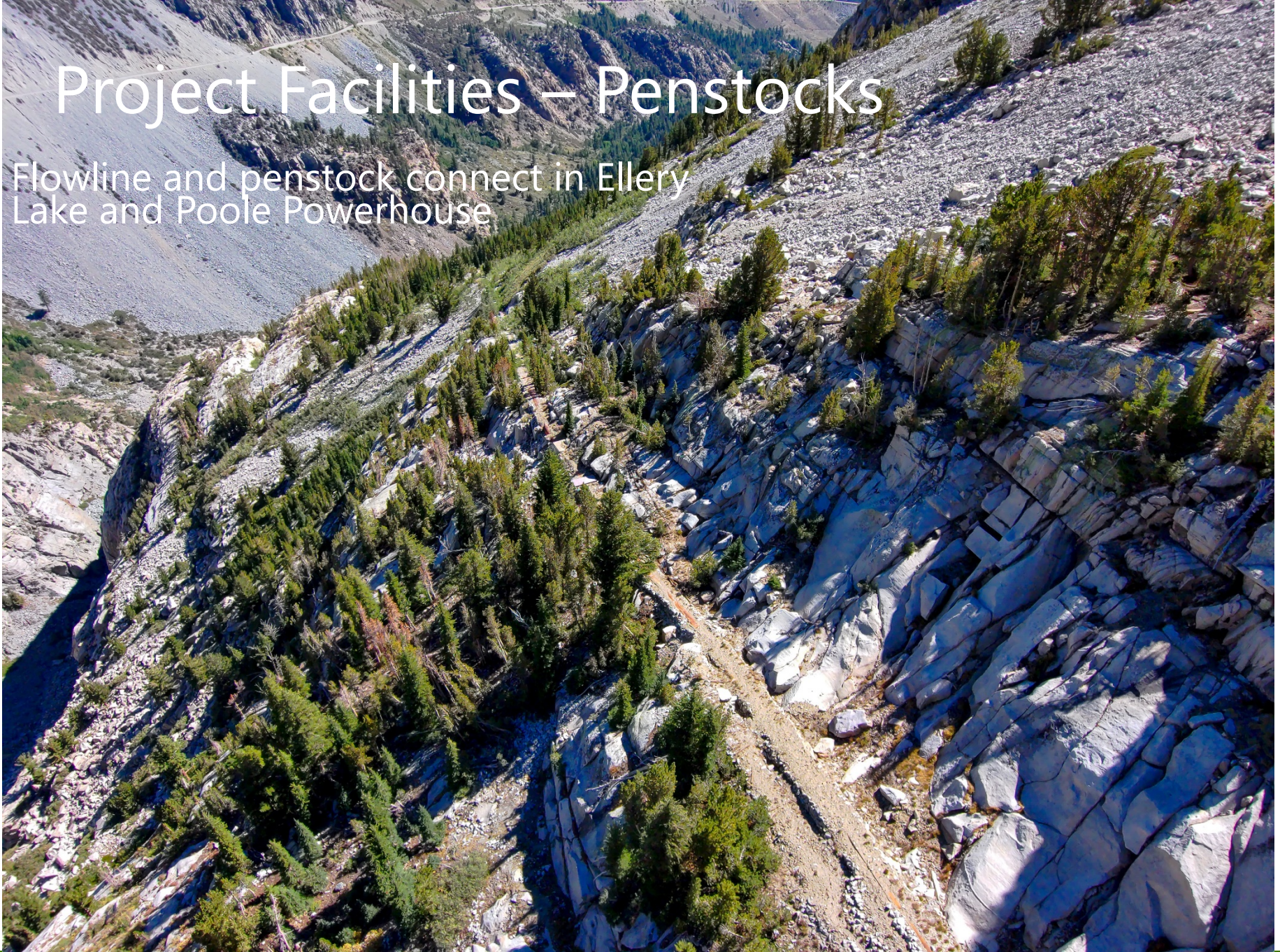


# Project Facilities – Poole Powerhouse

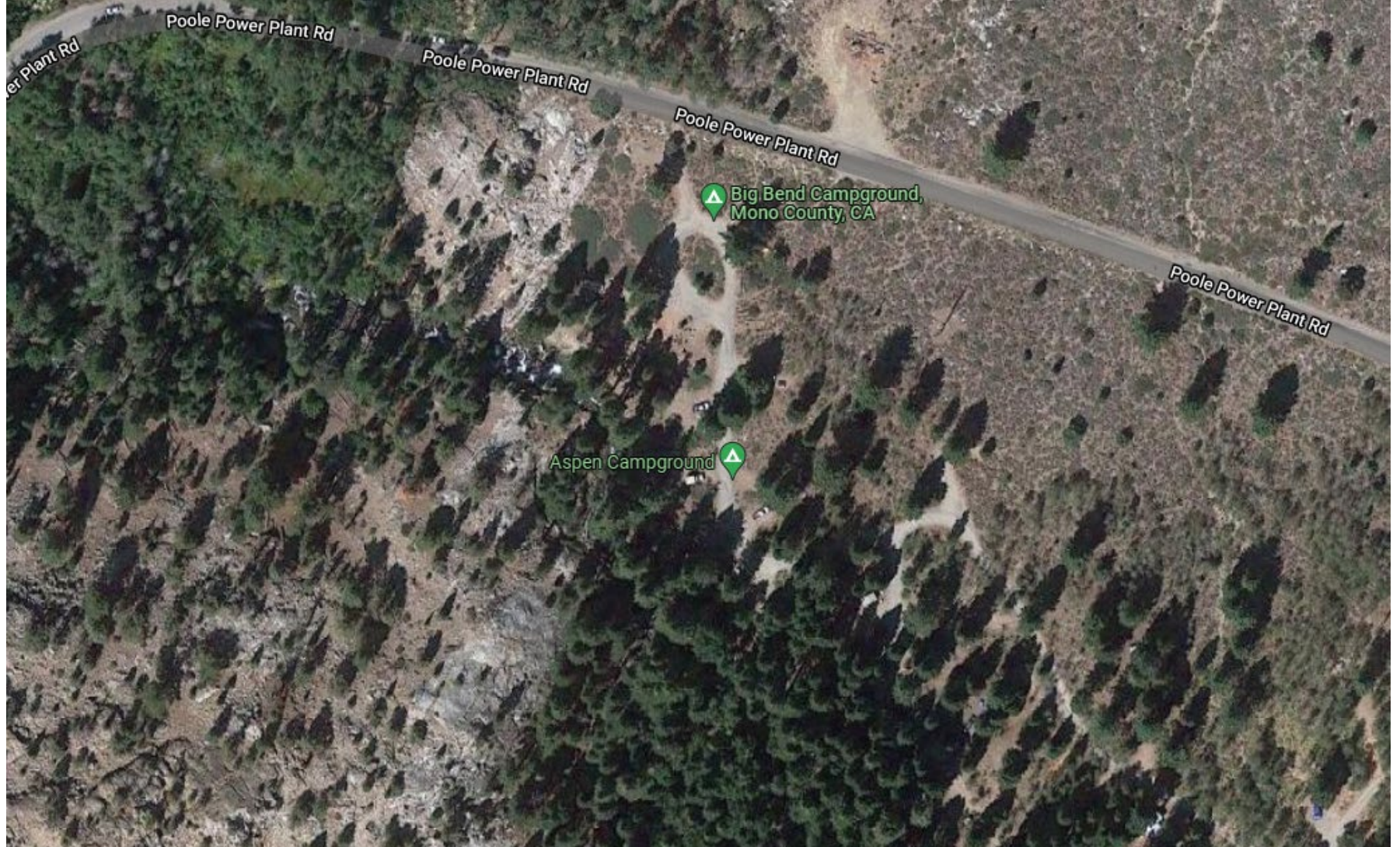


# Project Facilities – Penstocks

Flowline and penstock connect in Ellery Lake and Poole Powerhouse



# Nearby Recreation Facilities – Big Bend and Aspen Grove Campground (USFS)



# Nearby Recreation Facilities – Moraine Campground (USFS)



# Nearby Recreation Facilities – Lower Lee Vining Campground (USFS)



# Nearby - LADWP Diversion



# Nearby - LADWP Diversion

