

# Lee Vining Hydroelectric Project

## FERC No. 1388

CULTURAL & TRIBAL RESOURCES  
Technical Working Group Meeting

May 26, 2021

# Agenda

- Welcome & Introductions
  - Safety Moment
  - Introductions
  - Meeting goals
  - Review of March TWG notes and action items
  - PAD status
  - Project overview (as needed, if new participants are present)
- Discuss Comments Received on Draft PAD
- Discuss Study Plans
  - Cultural Resources
  - Tribal Resources
  - Update on other TWGs' Proposed Studies
- Schedule, Next Steps, Action Items
  - Next TWG date(s), TBD as needed
  - Study Plans
  - Other action items
- Final Questions

# Safety Moment



# Lee Vining Relicensing TWG Team

## SCE Team

**Matthew Woodhall**  
Project Manager

**Martin Ostendorf**  
Senior Manager

**Audry Williams**  
Senior Archeologist,  
Cultural/Tribal TWG Lead

**Seth Carr**  
Operations Manager

## Consultant Team

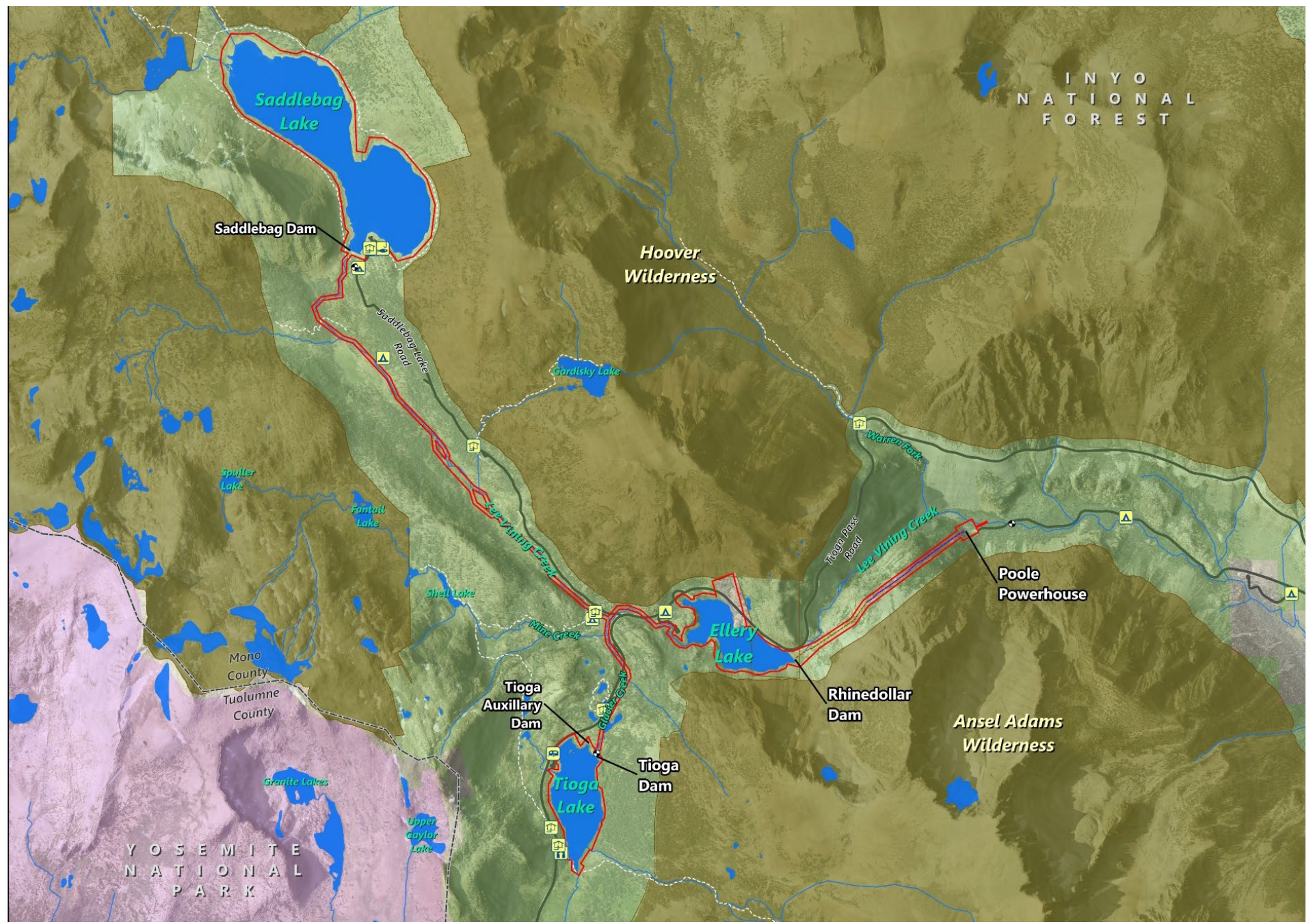
**Finlay Anderson**  
Project Manager

**Shannon Luoma**  
Deputy PM

**Kelly Larimer**  
Project Director

**Carissa Shoemaker**  
TWG Coordinator

**Cultural and Tribal  
Support**  
Lynn Compas  
Shelly Davis-King



# Confidential/Sensitive Information Disclaimer

- We are aware that sensitive issues may be discussed during this meeting, TWGs are open to all people but we believe this to be a safe place to share
- We welcome suggestions on how to include confidential or sensitive information
- If there is information that you'd rather not discuss here, please contact
  - Shelly Davis-King [shellydk@frontiernet.net](mailto:shellydk@frontiernet.net) or
  - Audry Williams [audry.williams@sce.com](mailto:audry.williams@sce.com)

# Review of March TWG Notes and Action Items

- Action Items

- ✓ Invite Raymond Andrews to the other three TWG meetings and send him a copy of the March 31 TWG PowerPoint presentation

- ✓ Ensure that mining/mine shafts and associated drainage/flows in the Project Area are discussed in the PAD

- March TWG Notes located on website

# Preliminary Application Document (PAD) Section Review Schedule

- Related to existing information; will be looking for your input.

Date	Activity
April 19	Cultural and Tribal draft sections of PAD distributed to Tribes
April 19 – May 19	Tribes' 30-day review of PAD sections
May 19	<b>1st pre-review of PAD comments due</b>
May 26	<b>TWG Meeting (discuss PAD Comments)</b>
October 2021	Public Meeting to discuss PAD and Notice of Intent (NOI)
October/November 2021	Stakeholders file comments on NOI/PAD and request studies



# Draft Preliminary Application Document Comments Discussion

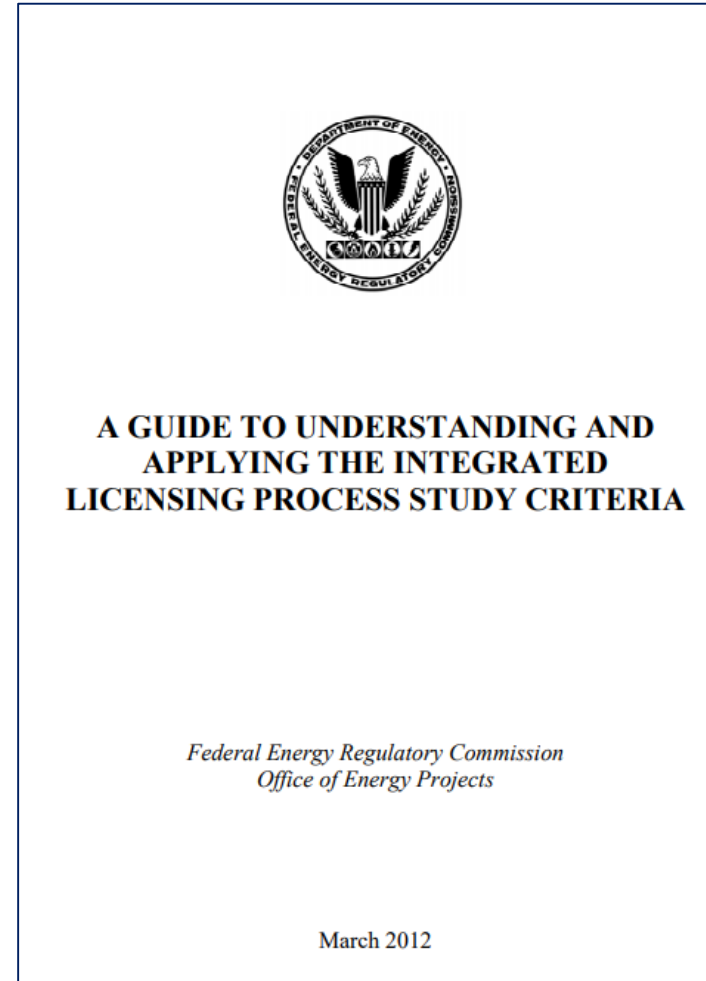
# PAD comment theme / comment #

- No comments received on “pre-draft” Cultural and Tribal Resource Sections of PAD
- Does anyone have any comments they would like to share at this time?

# Study Plans Discussion

# FERC has criteria for study identification

1. Goals and Objectives
  2. Relevant Resource Management Goals and Public Interest considerations
  3. Existing Information
  4. Project Nexus
  5. Proposed Methodology
  6. Level of effort and Cost
- <https://www.ferc.gov/sites/default/files/2020-07/guide-study-criteria.pdf>



# Goal of Study Plans

- Issuance of a new license is a major “federal action”
- Therefore, FERC will go through the NEPA process to ensure the action is:
  - Consistent with federal laws
    - Federal Power Act
    - National Historic Preservation Act
    - Clean Water Act
    - Endangered Species Act
  - Consistent with current resource management objectives
  - In the public interest

# Cultural Resource Study Plan Objectives, Rationale/Nexus, Proposed Study Area and APE, Methods

## Objectives:

- Identify previously recorded and unrecorded archaeological sites and built environment features within the Proposed APE and evaluate them for the National Register of Historic Places (NRHP).

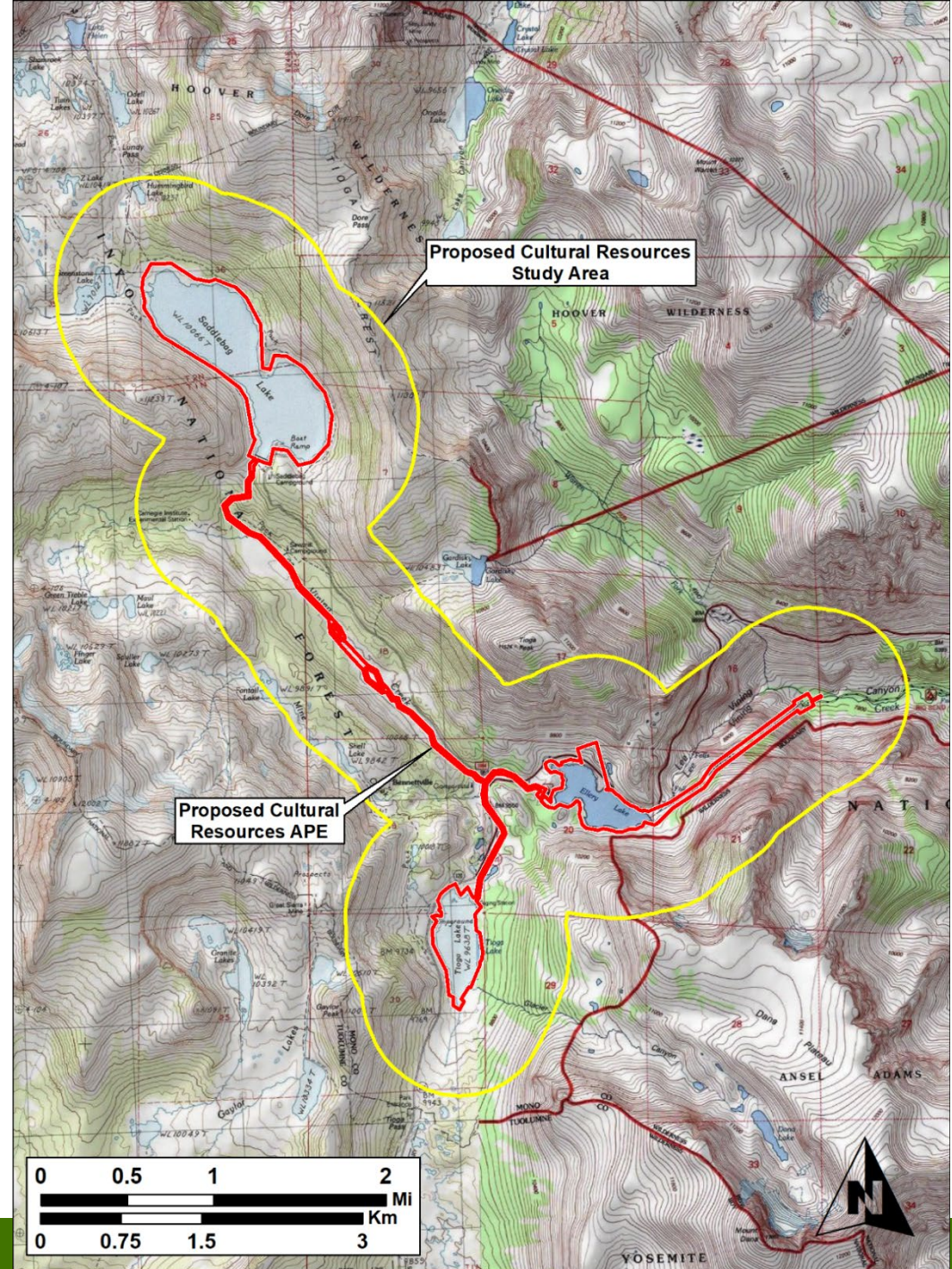
## Rationale/Nexus:

- Project operations and maintenance may affect NRHP-eligible resources and resources with associated Tribal values.

## Proposed Study Area:

- The proposed study area is a 0.5-mile buffer around the proposed APE.
- The proposed APE is the current FERC boundary.

# Proposed Cultural Resources Study Area and APE



# Cultural Resource Study Plan Methods

## Methods:

- Conduct background research throughout the life of the project
- Conduct archaeological and built environment surveys
- Prepare cultural resource technical reports for surveys
- Evaluate previously unevaluated archaeological and built-environment resources for the NRHP
- Prepare evaluation reports for archaeological and built-environment resources
- Prepare a Historic Properties Management Plan (HPMP) for cultural resources



# Tribal Resource Study Plan Objectives, Rationale/Nexus, Proposed Study Area/APE

## Objectives:

- Identify tribal resources within the Proposed APE and if potential historic properties, evaluate them for the NRHP.

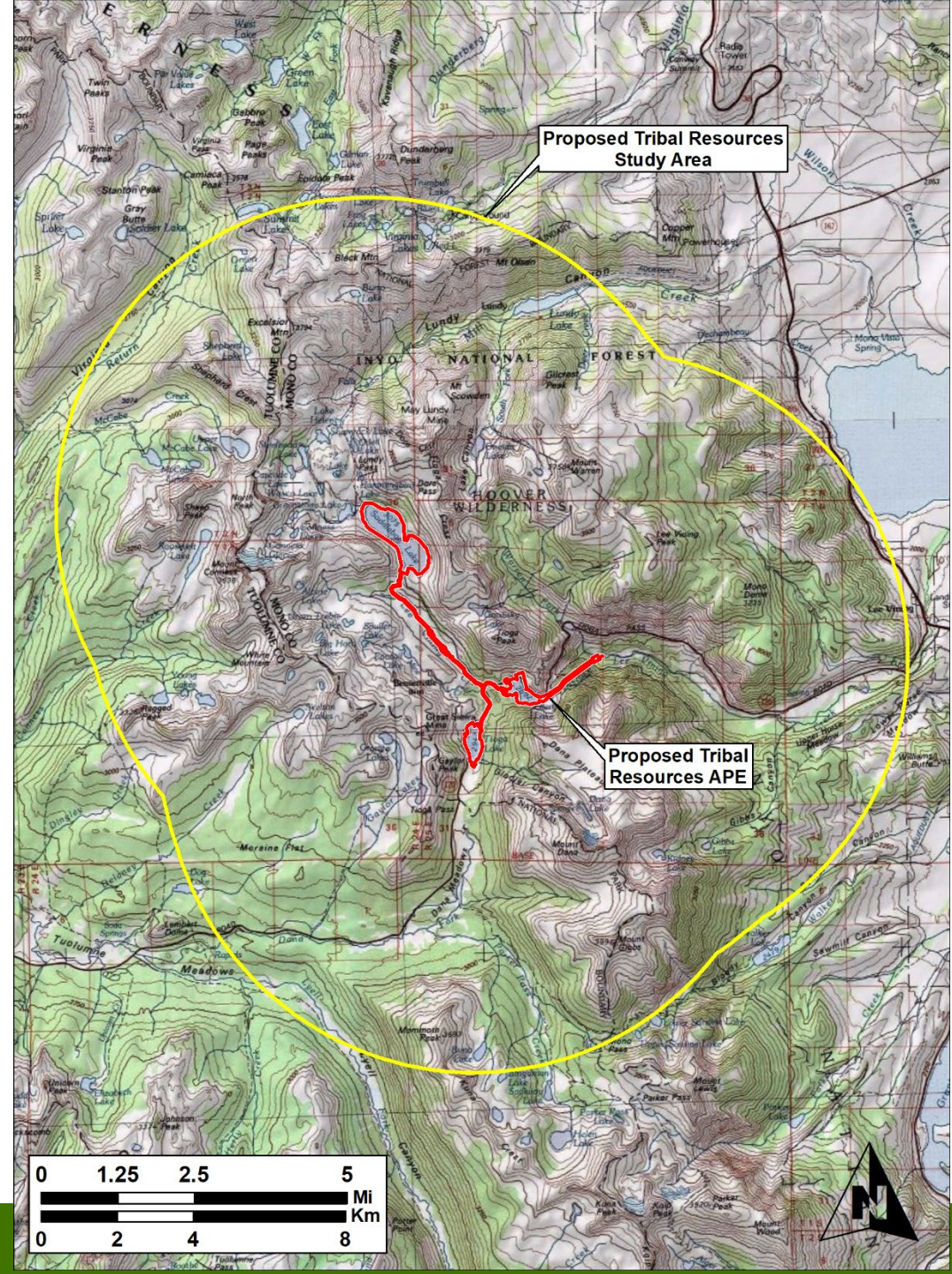
## Rationale/Nexus:

- Project operations and maintenance may affect NRHP-eligible tribal resources and resources with Tribal values.

## Proposed Study Area:

- The proposed study area is a 5.0-mile buffer around the proposed APE.
- The proposed APE is the current FERC boundary.

# Proposed Tribal Resources Study Area and APE



# Tribal Resource Study Plan Methods

## Methods:

- Conduct background archival and ethnohistorical research throughout the life of the project
- Contact and meet with Tribal governments as appropriate. Work with Tribal Preservation Offices to identify resources
- Interview tribal members
- Prepare tribal resource technical report
- Evaluate tribal resources that may be eligible for the NRHP and describe tribal resources that may not be historic properties
- Prepare evaluation reports as needed
- Review management plans for other resources areas and ensure tribal values are considered; contribute to the HPMP.

# Proposed Studies for Other Resource Areas

- Aquatics
  - Reservoir Fish Populations
  - Stream Fish Populations
  - Aquatic Habitat Mapping and Sediment Characterization
  - Aquatic Invasive Plants and Algae
  - Stream and Reservoir Water Quality Assessment
  - Hydro Operations Model/Operations Description

# Proposed Studies for Other Resource Areas (continued)

- Terrestrial and Botanical
  - General Wildlife and Rare, Threatened, and Endangered (RTE) Species
  - Botanical (RTE, invasive, and riparian)
- Recreation and Land Use
  - Recreation Use and Needs Evaluation
  - Existing Recreation Facilities Condition Assessment
  - Project Boundary, Lands, and Roads
  - Visual Quality Assessment

# RELICENSING SCHEDULE OVERVIEW

# Relicensing Process Schedule

(subject to change depending on relicensing process)

Date	Activity
August 2, 2021	SCE Files Notice of Intent/Pre-Application Document (NOI/PAD)
September 2021	FERC initiates Tribal consultation
September – October 2021	<i>If ILP:</i> FERC issues Notice of Commencement and Scoping Document 1 (SD1) and hosts scoping meeting/site visit <i>If TLP:</i> FERC approves use of TLP
Late September 2021	Public Meeting to discuss PAD and NOI
October/November 2021	Stakeholders file comments on NOI/PAD and request studies
November 13, 2021	SCE files proposed Study Plans
January 2022	SCE hosts Study Plan Meeting
April 2022	Revise Study Plans as appropriate
Spring/Summer 2022-2023	Conduct field studies
September 3, 2024	SCE Files Draft License Application
January 31, 2025	SCE Files Final License Application

# How to Stay Involved

- Check the Project website for updates/news at [www.sce.com/leevining](http://www.sce.com/leevining)
- You can view other SCE relicensing Projects at [www.sce.com/regulatory/hydro-licensing](http://www.sce.com/regulatory/hydro-licensing)
- Sign-up to receive Project-related emails through the Contact Registration Form/Project Questionnaire on the Project website
- Participate in an ongoing TWG
- Sign up for FERC's for e-subscription (docket number "P-1388") at [www.ferc.gov](http://www.ferc.gov)
- Email Carissa Shoemaker [carissa.shoemaker@erm.com](mailto:carissa.shoemaker@erm.com), Shelly Davis-King, or Audry Williams with questions





Thank you!