

# Severe Risk Conditions on Arnold Circuit

Circuit Name: Arnold PIF: 233221	
0.78 miles of undergrounding in Irvine	Tier 3 HFRA, Egress
Brief description of relevant local conditions considered in determining "Severe Risk" designation	
Surrounding fuel	Grass and Brush
Vegetation type and amount	Mixture of grass and brush with moderate to heavy fuel loading
Wind direction and/or speed	Northeast 15 - 35 MPH
Relevant terrain (hills, canyons)	Hilly
Structure/ population proximity and location	Residential areas immediately south and west
Historical fires	This area can have brush fires during the summer and fall months
Natural or artificial barriers	None
Technosylva max acres	2330 - 3692 Acres
Targeted undergrounding difficulty	High

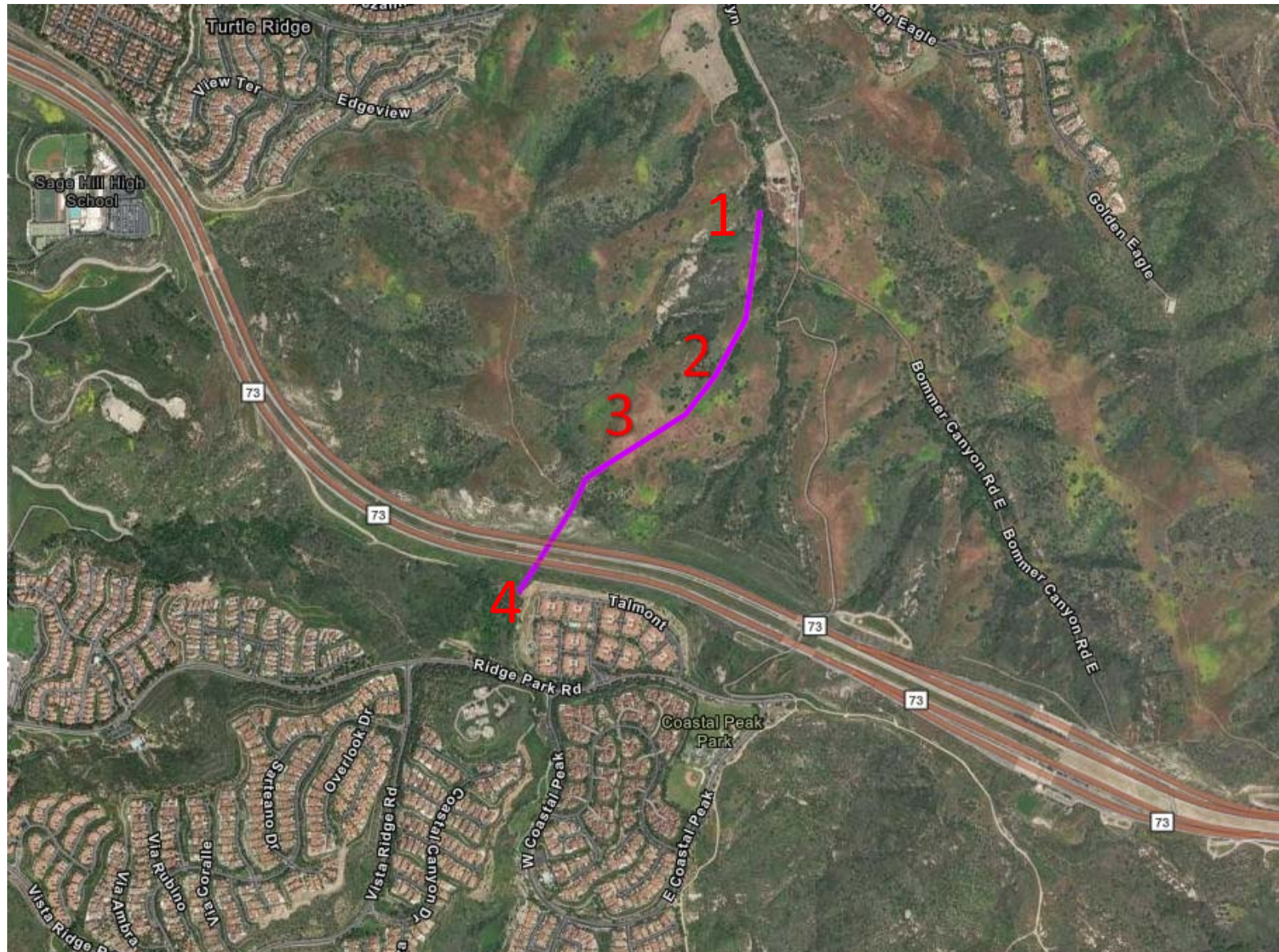


Planned targeted undergrounding

Notes: Extensive wildland area and residential development to the south of this area, which would be downstream of a fire starting from this circuit during a Santa Ana wind event. Fires of this nature would spread in a southerly direction at a very rapid rate threatening lives and property. Fire size would be relatively small due to the proximity to the coast.



# Overview of Arnold TUG Scope





# Pictures Along Path of Arnold TUG Scope



Picture #1



Picture #2



Picture #3

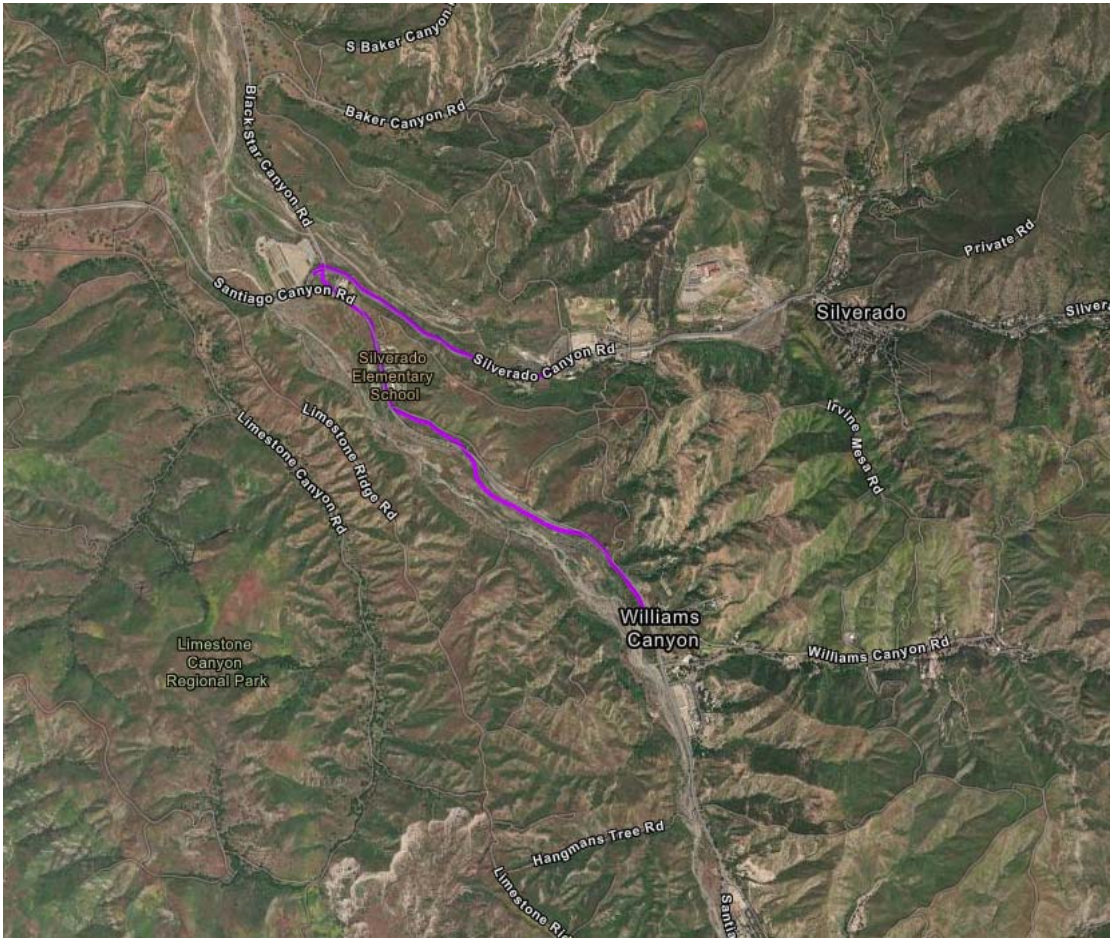


Picture #4



# Severe Risk Conditions on Atento Circuit

Circuit Name: Atento      PIF: 243207	
2.98 miles of undergrounding in Silverado	Tier 3 HFRA, Community of Elevated Fire Concern, Burn-in Buffer
Brief description of relevant local conditions considered in determining "Severe Risk" designation	
Surrounding fuel	Grass and brush
Vegetation type and amount	Mixture of grass interspersed with mixed chaparrals with heavy fuel loading
Wind direction and/or speed	Northeast 15-30 MPH
Relevant terrain (hills, canyons)	Hilly
Structure/ population proximity and location	Isolated structures in the immediate vicinity
Historical fires	Silverado fire 2019
Natural or artificial barriers	Irvine lake to the Northwest
Technosylva max acres	836 - 6271 Acres
Targeted undergrounding difficulty	Low - Medium

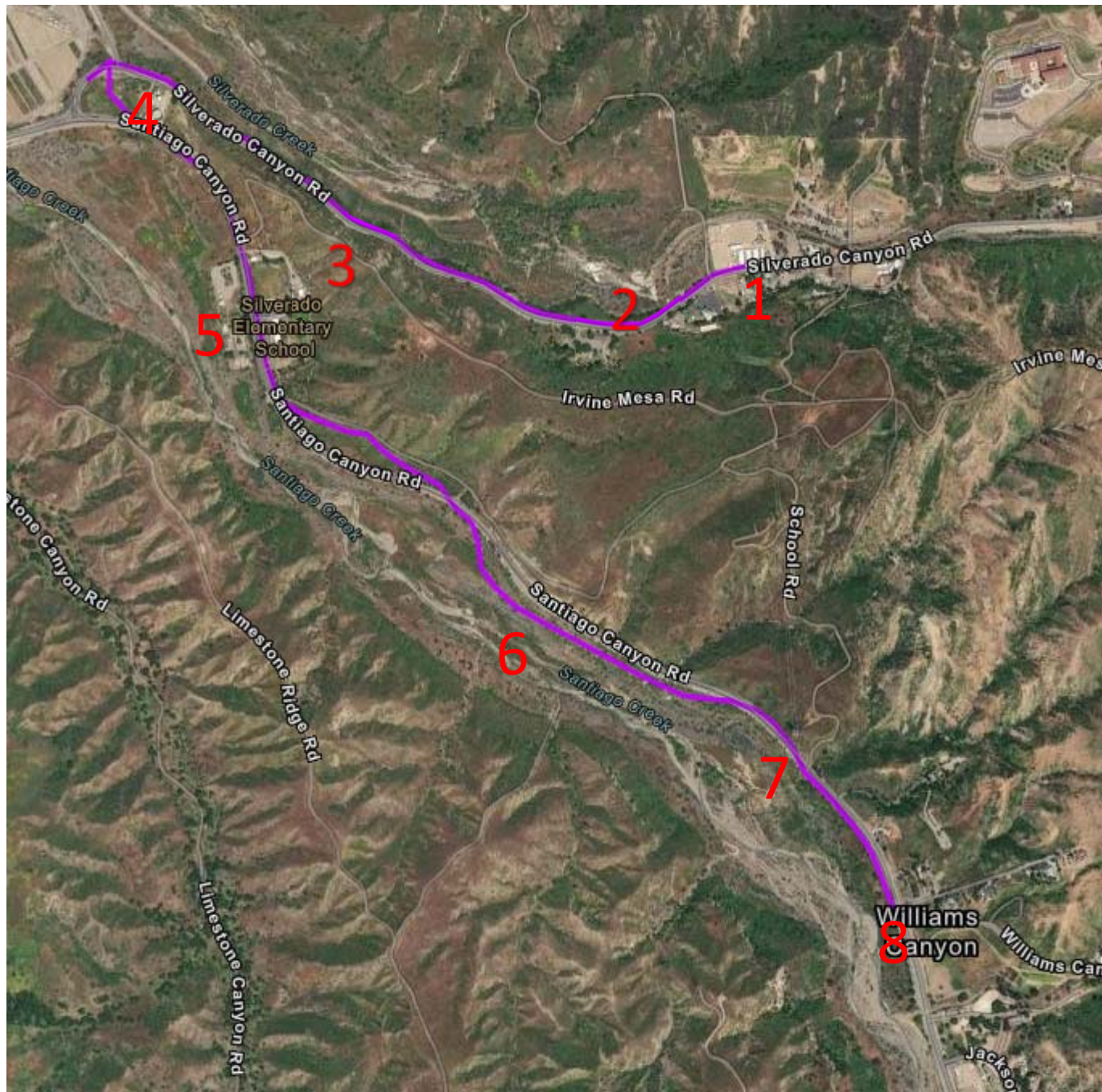


Planned targeted undergrounding

Notes: N/A

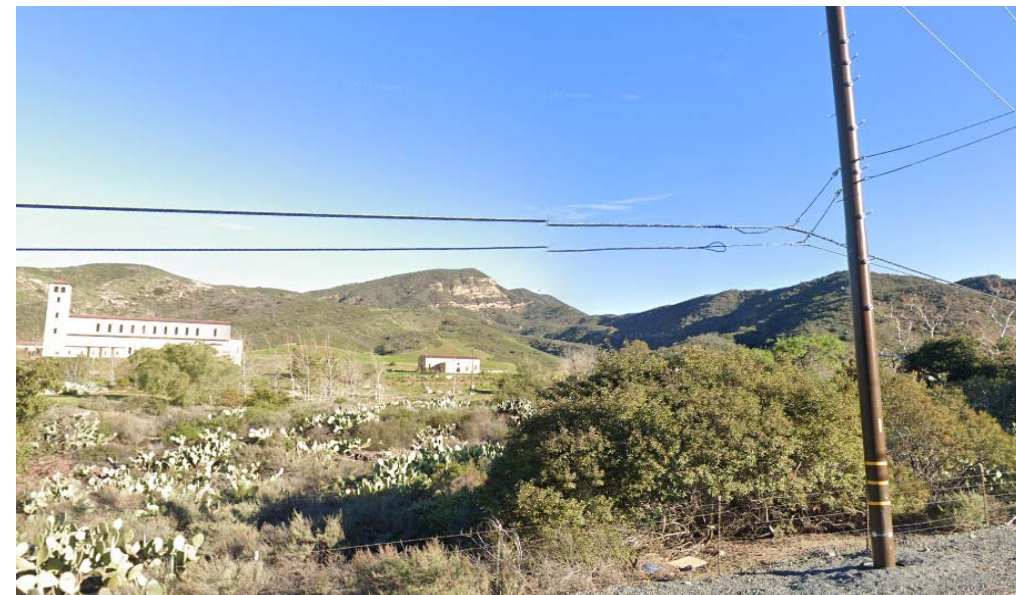


# Overview of Atento TUG Scope





# Pictures Along Path of Atento TUG Scope



Picture #1



Picture #2



Picture #3



Picture #4



# Pictures Along Path of Atento TUG Scope



Picture #5



Picture #6



Picture #7



Picture #8



# Severe Risk Conditions on Taiwan Circuit

Circuit Name: Taiwan PIF: 229014	
0.32 miles of undergrounding in Silverado	Tier 3 HFRA, Burn-in Buffer
Brief description of relevant local conditions considered in determining "Severe Risk" designation	
Surrounding fuel	Grass and brush
Vegetation type and amount	Mixture of grass interspersed with mixed chaparrals with heavy fuel loading
Wind direction and/or speed	Northeast 15-30 MPH
Relevant terrain (hills, canyons)	Hilly
Structure/ population proximity and location	Isolated structures in the immediate vicinity
Historical fires	Silverado fire 2019
Natural or artificial barriers	Irvine lake to the Northwest
Technosylva max acres	150 – 5538 Acres
Targeted undergrounding difficulty	Low - Medium



Planned targeted undergrounding

Notes: N/A



# Overview of Taiwan TUG Scope





# Pictures Along Path of Taiwan TUG Scope



Picture #1



Picture #2



Picture #3

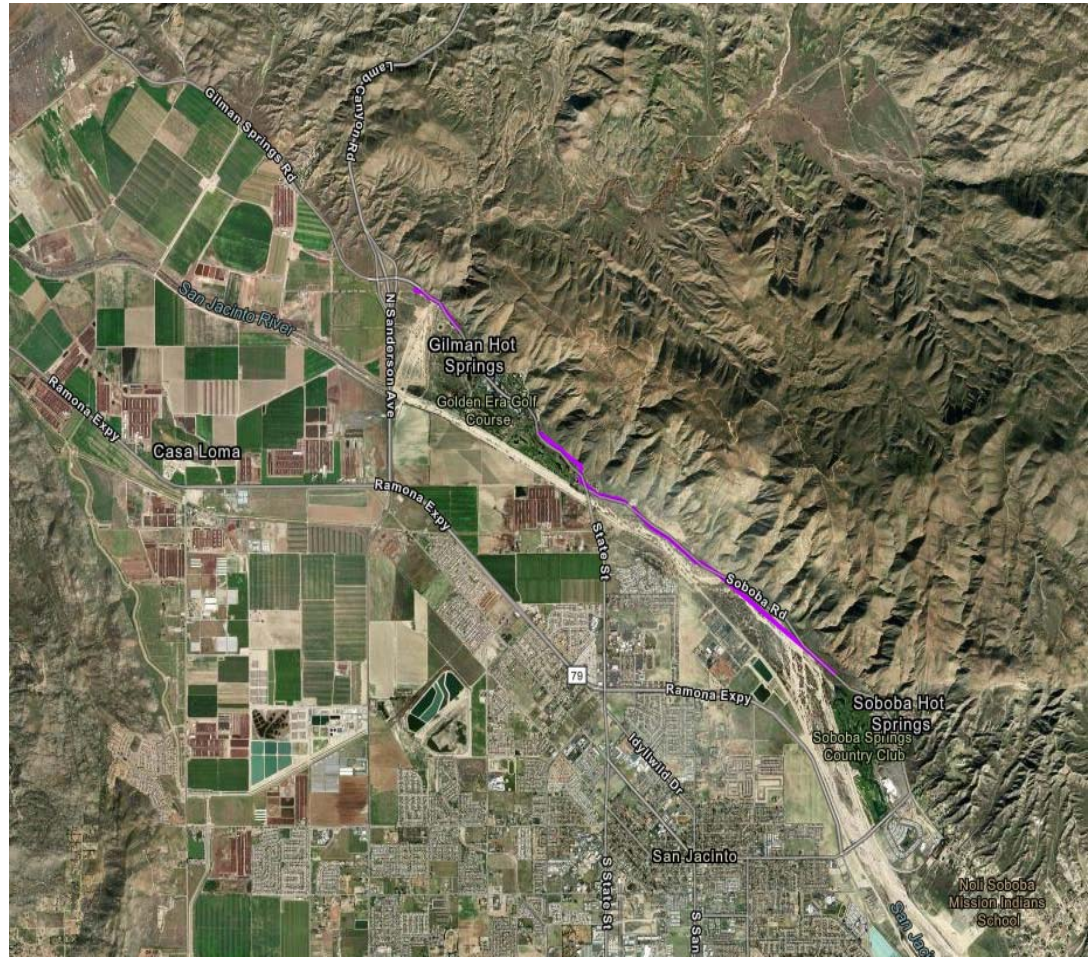


Picture #4



# Severe Risk Conditions on Lauda Circuit

Circuit Name: Lauda PIF: 277031	
7.11 miles of undergrounding in San Jacinto	Tier 3 HFRA, Burn-in Buffer
Brief description of relevant local conditions considered in determining "Severe Risk" designation	
Surrounding fuel	Mostly grass
Vegetation type and amount	Extensive grassland with light to moderate fuel loading
Wind direction and/or speed	North to northeast 15-25 MPH
Relevant terrain (hills, canyons)	Mostly flat but located at the base of the foothills
Structure/ population proximity and location	Extensive residential areas to the south
Historical fires	Fairview fire 2022
Natural or artificial barriers	Extensive agricultural land lies to the west
Technosylva max acres	77 – 6518 Acres
Targeted undergrounding difficulty	Medium

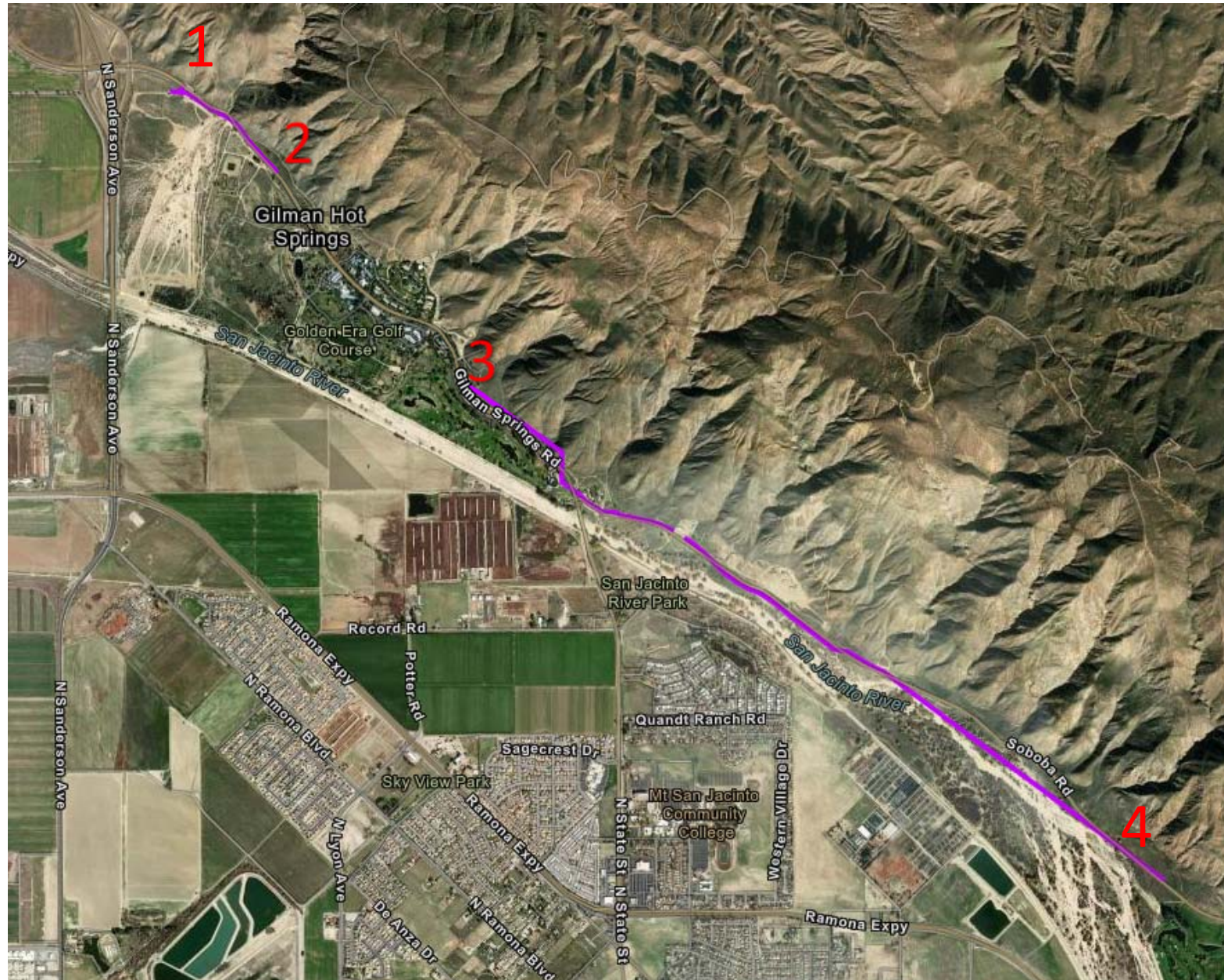


Planned targeted undergrounding

Notes: N/A



# Overview of Lauda TUG Scope





# Pictures Along Path of Lauda TUG Scope



Picture #1



Picture #2



Picture #3



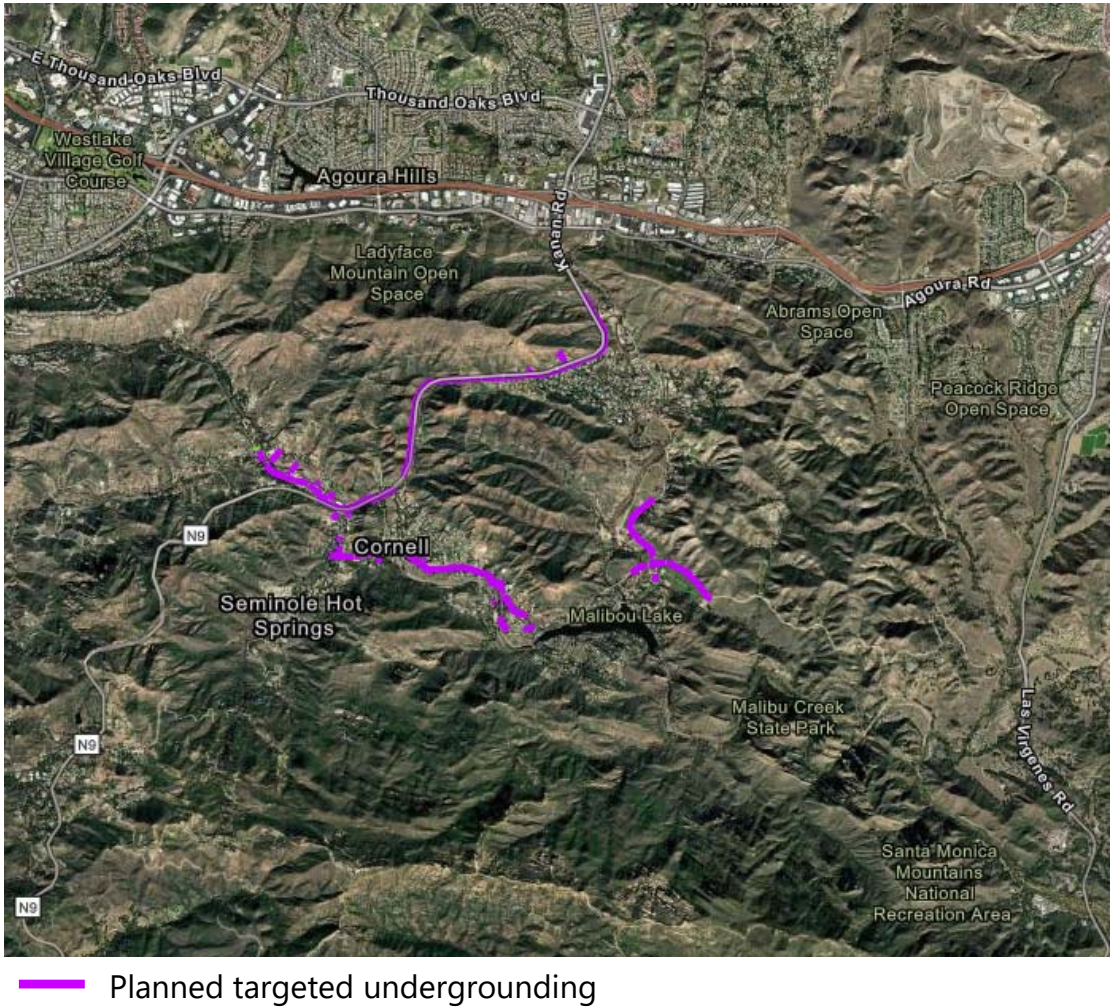
Picture #4



# Severe Risk Conditions on Mulholland Circuit

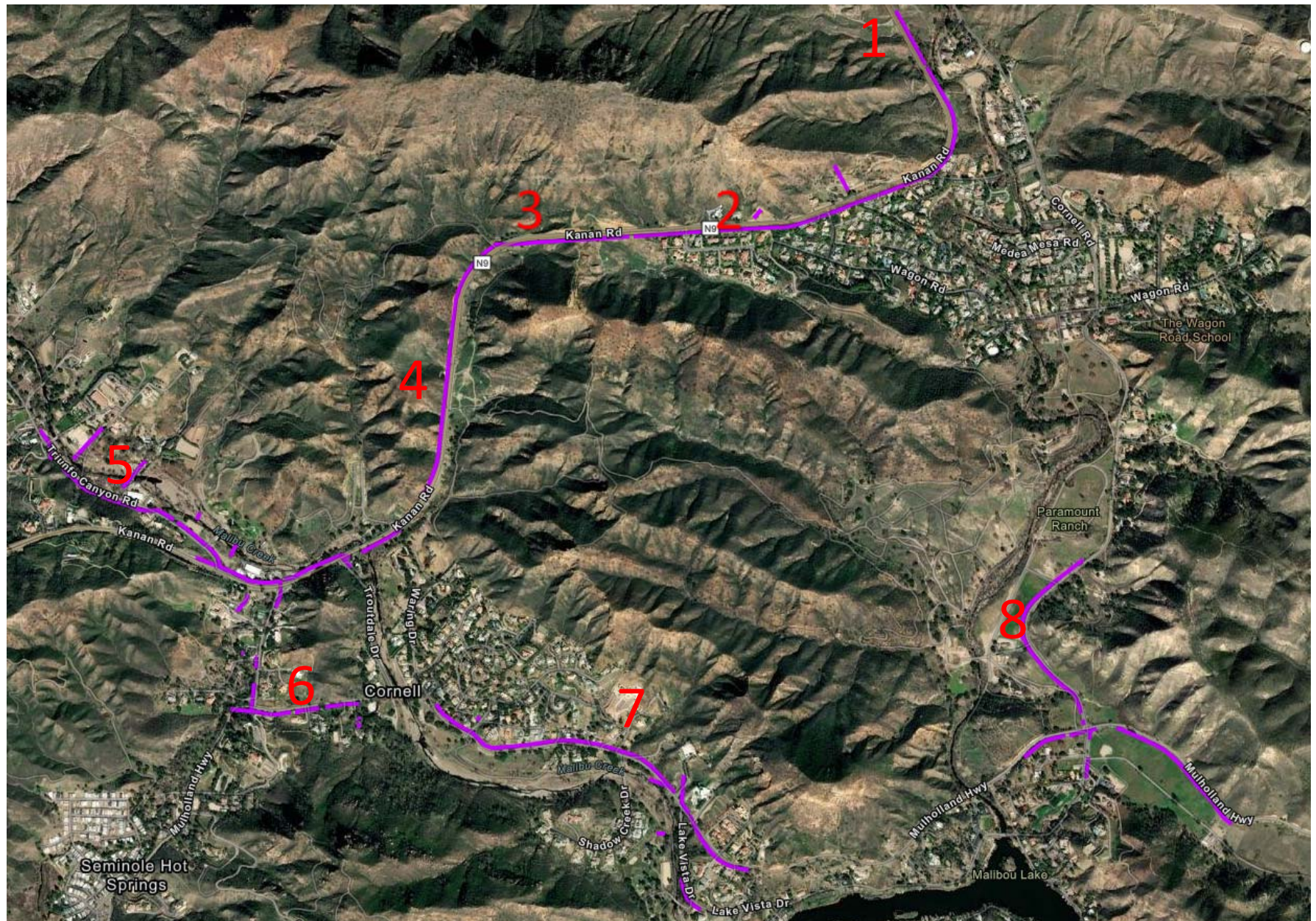
Circuit Name: Mulholland    PIF: 335526	
6.13 miles of undergrounding in Agoura Hills	Egress, >10K Acres Burned, Burn-In Plexel
Brief description of relevant local conditions considered in determining “Severe Risk” designation	
Surrounding fuel	Grass and brush
Vegetation type and amount	Mixture of grass and mixed chaparral with moderate to heavy fuel loading
Wind direction and/or speed	Northeast 20 – 30 MPH
Relevant terrain (hills, canyons)	Mountainous
Structure/ population proximity and location	WUI intermix
Historical fires	Woolsey 2018
Natural or artificial barriers	N/A
Technosylva max acres	51 – 14320 Acres
Targeted undergrounding difficulty	Medium

Notes: N/A





# Overview of Mulholland TUG Scope





# Pictures Along Path of Mulholland TUG Scope



Picture #1



Picture #2



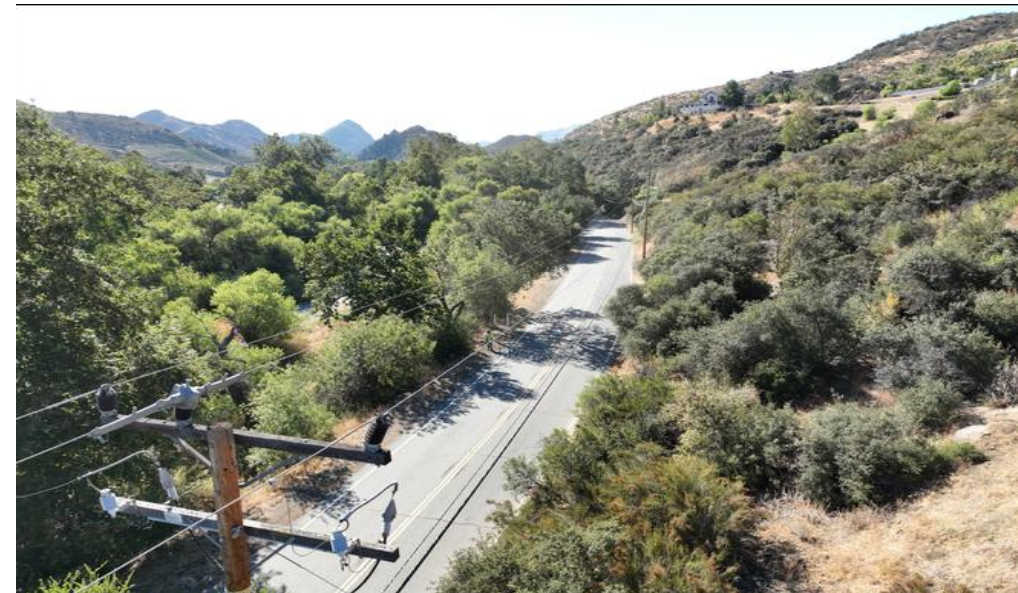
Picture #3



Picture #4



# Pictures Along Path of Mulholland TUG Scope



Picture #5



Picture #6



Picture #7

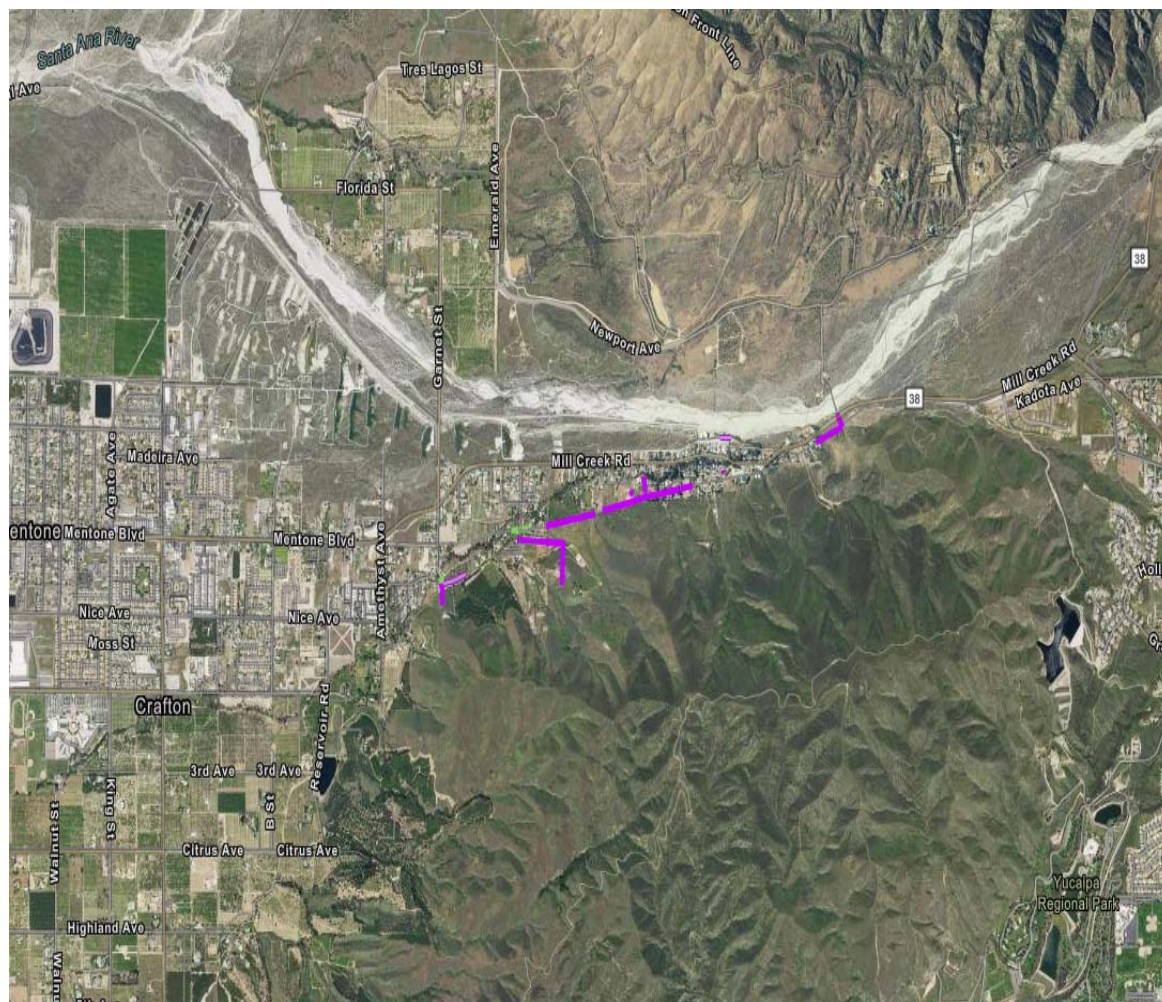


Picture #8



# Severe Risk Conditions on HASS Circuit

Circuit Name: Hass PIF: 531044	
1.02 miles of undergrounding in San Bernardino	Tier 3 HFRA, Egress, Burn-in Buffer
Brief description of relevant local conditions considered in determining "Severe Risk" designation	
Surrounding fuel	Grass and brush
Vegetation type and amount	Grassland with mixed chaparral, moderate to heavy fuel loading
Wind direction and/or speed	Regular days southwest to west 10 - 18 MPH, northeast 15 - 30 MPH
Relevant terrain (hills, canyons)	Hilly
Structure/ population proximity and location	Scattered communities interspersed within wildland areas
Historical fires	El Dorado Fire in 2020, Apple Fire in 2020 occurred near this area
Natural or artificial barriers	None
Technosylva max acres	760 - 4352 Acres
Targeted undergrounding difficulty	Medium/High

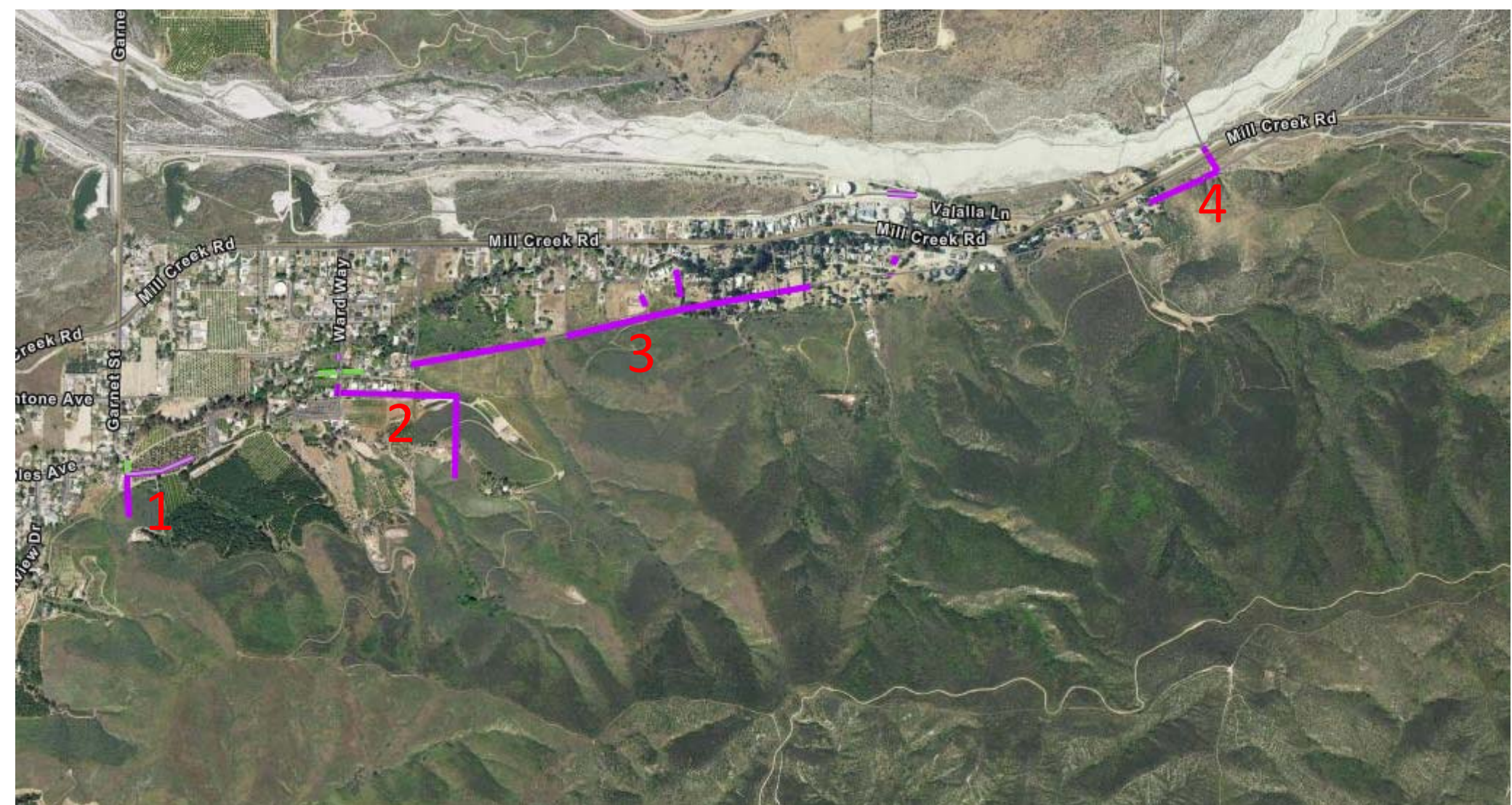


Planned targeted undergrounding

Notes: N/A



# Overview of HASS TUG Scope





# Pictures Along Path of HASS TUG Scope



Picture #1



Picture #2



Picture #3



Picture #4